

# grange NOW

ISSUE 384 SEP 2023  
www.grangenow.co.uk

(c) Classico Latino / Dylan Nolte

**Classico Latino - Page 17**

## ALAN SPEIRS GENERAL BUILDER

ALL BUILDING WORK  
UNDERTAKEN

Roofing, Plastering, New Builds,  
Renovations & Joinery Work

Tel: 015395 34403  
Mobile: 07956 006 502

## ARNOLD GREENWOOD

Incorporating Shirley M. Evans  
Solicitor Limited

Solicitors & Estate Agents

w: arnoldgreenwood.co.uk/solicitors  
t: 015395 35208

## TB Shepherd & Son Ltd Plumbers & Heating Engineers

DAVID 07810 835 236  
GRAHAM 07810 646 568  
OFFICE 015395 33109

Since 1952



## digital aerial & satellite specialists

Domestic Digital & Aerial Upgrades  
Commerical Systems - Design & Install  
Sky Installation & Repairs  
Home Sound & Vision Systems

digital TV  
Reg No: 18265860

FREESAT HD skydigital FREEVIEW

Grange 015395 32792  
Mobile: 07798 697880



Interior shutters, curtains, venetian,  
roller, roman, vertical and Velux blinds.  
Motorisation Available

Please phone Darren or Jo  
01524 702111

'Where Quality and Courtesy  
come as Standard'



MOT

& Service Centre

Open daily 8am - 5pm

## GREAT VALUE TYRES

For fantastic service  
and customer care...

Tel 015395 58920  
Mile Road Garage, Moor Lane, Flookburgh.



The only  
Locksmiths  
based in  
Grange

## All Lock Problems Solved

- Trading Standards Approved
- Locks Opened, Repaired & Fitted
- Domestic & Commercial
- UPVC Door Lock Specialists
- Police (CRB) Checked
- High Security Locks Fitted
- OAP Discount

Eden Mount Road, Grange

Mobile 07886 831336

www.locks-express.com



Services  
GRANGE LTD

## STATION YARD GARAGE

VEHICLE SERVICING /  
REPAIRS, TYRES, EXHAUSTS,  
BATTERIES, MOTS,  
DIAGNOSTICS

015395 35443

office@rpservicesgrange.co.uk

Station Yard Garage, Station Yard,  
Grange-Over-Sands, Cumbria,  
LA116DW



Tree Surgeon  
Covering all  
aspects of  
Tree Surgery

07771 680 919

015395 34299

acorntreeservices@icloud.com

## YEWBARROW GARAGE



## GRANGE'S NUMBER ONE M.O.T. TESTING CENTRE

SERVICING & REPAIRS TO ALL MAKES AND  
MODELS, CARS, VANS, (PETROL & DIESEL)  
ALSO ALL VEHICLE AIR-CON SYSTEMS  
CHECKED AND RE-GASSED.

FREE COLLECTION AND DELIVERY OR  
FREE COURTESY CAR BY APPOINTMENT

FREE fitting on batteries, tyres & exhausts  
Latest Vehicle Diagnostic Equipment  
Hofmann 4-wheel alignment system

AIRCON RE-GASSING AVAILABLE NOW  
FOR NEW HFO1234YF SYSTEM

Tel: 015395 34291

24hr Accident & Breakdown Recovery: 07968 091 428  
Email: yewbarrowgarage@live.co.uk



Providing accident repairs from our purpose build  
Accident Repair Centre in Flookburgh. From a  
minor scratch to severe accident damage. Carrying  
out repairs for private, trade and all major insurers.

- Guaranteed excellence at competitive prices
- Cars, vans, motorhomes, motorcycles & restorations
- Alloy wheels refurbished
- Interior valeting & exterior polishing/detailing
- Free courtesy cars & vans
- Accident recovery service

www.evansautobody.co.uk

Moor Lane, Flookburgh, LA11 7LS  
(Follow road 3/4mile then take second left turn)  
015395 58329

**Panararmer**  
Kitchens • Bathrooms • Bedrooms  
1983 - 2023: 40 YEARS OF BUSINESS

Call Us  
015395 63523

## Stylish kitchen, bathroom and bedroom design and installation



Visit our  
showroom in  
Heversham

### A full design and installation service

Your new kitchen from Panararmer will reflect your life and style. Visit our kitchen showroom to discover beautiful traditional designs from Laura Ashley, high-quality appliances from trusted brands such as BOSCH and NEFF, and the Quooker tap.

We've been providing quality design, installation, excellent products and efficient workmanship since 1983.

[www.panararmer.co.uk](http://www.panararmer.co.uk)

Celebrating 40 years working in our local community  
Unit 3 Princes Way, Leasgill, Milnthorpe, Cumbria LA7 7FG

# The strength to step forward

Ensuring people coping with cancer or grief across North Lancashire and South Cumbria will always have somewhere to turn.



### Our Services

- Acupressure
- Alexander Technique
- Aromatherapy massage
- Counselling
- Creative groups (art, jewellery making, woodwork)
- Eye Movement Desensitisation and Reprocessing (EMDR)
- Hypnotherapy
- Indian head massage
- Mindfulness
- Nutritional advice
- Physical well-being classes (yoga, pilates, swimming)
- Reflexology
- Reiki
- Simple Lymphatic Drainage
- Specialist children's counselling and play therapy
- Young People's Peer Support Group



**Grange Drop-in Group. Every Friday 2 - 4pm**  
**St Charles Catholic Church, Kents Bank Road**

### For more details

03330 150 628

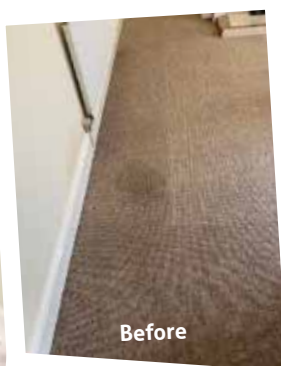
[info@cancercare.org.uk](mailto:info@cancercare.org.uk)

[cancercare.org.uk](http://cancercare.org.uk)

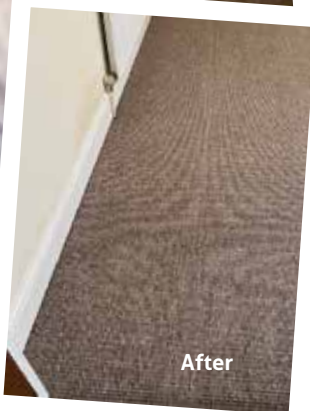


**CancerCare**

Registered Charity Number: 1120048



Before



After



## Professional Carpet & Upholstery Cleaning

We are a local, independent company serving the Furness and South Lakes areas.

**Book now!**

We will wear a face covering on request.

We also clean upholstery, including leather.



[revivecarpets.co.uk](http://revivecarpets.co.uk)

01229 230821 07747 043919



## Editor's Letter

Eagle eyed readers will soon spot that there is no school section this month. They are of course all on holiday so top marks to Lindale Primary who still managed to send in some news - see page 12.

After the article last month about setting up a community e-bike scheme, I have now received news from the Morecambe Bay partnership to say that they intend to set up an ebike and mobility scooter rental scheme in the old waiting room at Grange station. More about that on page 8.

This month's fabulous cover photo came in from Grange and District concert club. Find out more about their upcoming concert on page 17.

It always amazes us how many events are going on around and about. As you will see in the pages that follow and in particular on the what's on page, you could be busy from morning till night, every single day if you so wished.

A big thank you to everyone who advertises in Grange Now - please show them your support.

Enjoy this issue of Grange Now.

**Next deadline 15th September.**

Best wishes,

Chris

## Table Making Course

1 Day £120

This one-day course enables you to learn all the traditional skills used to produce a useful and practical table. All the materials are sourced from the woodland on the estate, you'll split the wood by hand and turn the legs and joints on the pole lathe. The final stage involves fitting and wedging the through-tenons on the legs.

The pieces you will create on this course are traditional to the woodland heritage of the Lake District. All courses are held at the workshop on the Witherslack Estate, which is the largest ancient woodland in Cumbria. You will learn to select green Ash timber, sustainably felled in the surrounding woodland. You will then be taken through the process of splitting the logs using wedges and mallets to produce the material needed. No previous experience is needed, and all levels of ability are welcome.

edward.carefoot@gmail.com Tel 07841 595 407



## Future Deadlines

ISSUE	DEADLINE	RELEASE
GN385	15th Sep	28th Sep
GN386	13th Oct	26th Oct

## Joint Captains Charity Day



**Over 120 Members and Visitors enjoyed a great day at Grange-Over-Sands Golf Club in support of the local charity St Mary's Hospice.**

Each year, the joint captains are asked to choose a charity to fundraise for throughout their time in post and St Mary's has been lucky enough to have been chosen by this year's captains: Margaret Taylor and Steve Johnson. On top of this, Margaret is also participating in a charity skydive at Cark Airfield to raise funds for her local hospice.

The weather initially was a little wet but soon brightened up around lunchtime. There was a prize available on all 18 holes which had been kindly donated by Members and Local businesses along with five team prizes and a hole in one prize which were all supported by the main sponsors: Gaynors of Ambleside, Fuction18.com, Plumgarths of Kendal and Home & Finance in Ulverston.

Annabelle Holloway, Area Fundraising Manager said: "We are extremely grateful for the support of Margaret, Steve and everyone involved in the Grange-Over-Sands Golf Day. Their support means so much to our staff, patients, their family members and our

community. We only receive 22% of our funding from the NHS, which means that the care of roughly eight out of ten of our patients is funded by fundraising events like this and people like Margaret and Steve. We couldn't do what we do without them."

Margaret, Steve and the team managed to raise over £3000 on the day and would like to thank their main sponsors along with the following local businesses who provided a number of our individual Hole and Raffle prizes:

Treatment Rooms Grange, David G Bushell Electrical Ltd., C.S.Drinks Ltd., W.J.Crowe & Son Decorators Ltd., Cavendish Arms Cartmel, Stephen Wilson Decorators, B Cowperthwaite Electrics, Pheasant Inn, Allithwaite, Kacuzi Hair Studio, Cartmel Coffee, Brookes Supplies, Priory Hotel Cartmel, Windermere Cruises, Lakeland Motor Museum, Proctors Butchers, House of Flowers, Lakeside and Haverthwaite Railway, Irvings Butchers Ulverston, P.D Hutchinson Greenodd, Henry Armer & Son, Saunders & Son Funeral Directors.

## J P Computers

Based in Cartmel  
Free consultation  
Collect & return service

**Tel: 015395 35513**  
**Mob: 07964 180021**

[www.johnparrycomputers.com](http://www.johnparrycomputers.com)

## South Lakes Oven Cleaning

RELIABLE . FRIENDLY AND PROFESSIONAL

**Agas, Ovens,  
Hobs & Extractors**

**Quote Grangenow  
for 10% off!**

**Tel 015395 55868**

[www.southlakesovencleaning.co.uk](http://www.southlakesovencleaning.co.uk)

**grange** NOW

Grange Now, Kendal Road, Bowness, LA233HU  
info@grangenow.co.uk  
www.grangenow.co.uk  
Tel 015395 22234

## Thermoshield John Rishton

Windows, Doors & Conservatories  
Replacement Roof Specialist



With over 30 years  
experience supplying and  
designing uPVC Windows,  
Doors & Conservatories

Tel: 015395 34212 Mob: 07970 537 871  
email: thermoshieldgrange@gmail.com

## COME SAILING ON LAKE WINDERMERE.

Experience the thrill of sailing  
along on England's largest lake  
surrounded by mountain scenery.  
Great birthday present or a chance  
to try something new. No experience  
required. Fully qualified  
RYA senior instructor and  
fully insured boat.  
Contact hello@  
sailwindermere.co.uk



INDEPENDENT  
INVESTMENT  
ASSOCIATES  
LIMITED



### Independent Chartered Financial Planners

Cragdale House, Kents Bank Road,  
Grange-over-Sands. LA11 7EY

Tel: 015395 36964

Email: info@iiagrango.co.uk

Web: www.iiatld.co.uk

#### Financial Planners:

Leigh S. Hornby BA (Hons), IMC, CFP

Gary Richardson FCIB, CFP

Jason Crane APFS, CFP

Andrew J. Troughton APFS

Ian D Hartley MCSI, CFP

Will Wilson DipPFS

Chris Hill CFPTM, Chartered MSC

Authorised and Regulated by the Financial Conduct Authority

## Investment Matters

By Will Wilson DipPFS

### Successful Long Term Investing

Successful long term investment is not just about buying low and selling high. Stock markets rise and fall, trying to find your way around, particularly during times of high volatility, can be difficult, but rules of sensible investment remain consistent.

- Buy what's right for you; just because an investment works well for somebody else does not mean it is right for you, it is important to consider your own situation.

- Diversity; spread your risk by diversifying your portfolio across a mixture of asset classes, industry sectors and areas of the world.

- Invest for the long term; trying to make short term profits increases risk and can add to expense, so consider time in the market

rather than timing the market.

- Don't believe everything you read; headlines can be misleading, make sure you remain focussed on your objectives and don't sway from your attitude to investment risk.

- Review your portfolio regularly; portfolios are set up to meet needs and objectives, these needs and objectives will change over time, you must ensure that the portfolio is adapted to meet these changes.

Working with a Financial Planner ensures a portfolio suited to your needs and objectives, where your money is working hard for you in a tax efficient manner, and you will have the comfort of knowing that as things change you have someone to advise you through those changes.

The comments in this Editorial are only general and should not be taken as specific advice. It is important that you seek independent advice before taking any action on the above, or any other, subjects. It should be noted that the value of some investments can fall as well as rise therefore you may get back less than originally invested. Past performance is not necessarily a guide to the future. Independent Investment Associates Limited is authorised and regulated by the Financial Conduct Authority.

## A Swift tale

A grounded swift was found in the road on School Hill in Lindale on 1 August.

It appeared unharmed, but was unable to take off from the ground, and was in serious danger. Lucy Calvert picked it up, and tried to encourage it to fly; it took off briefly, but landed again in her garden, so she undertook to feed it until it was stronger. Advice from the Swift Conservation Society and the Wildlife Rescue Centre at Kendal College concluded that the swift needed to be 35-40 grams in order to fly to its winter



home in southern Africa. The swiftlet weighed only 23 grams at the outset, and Lucy fed it several times a day on a diet of dried crickets and waxworms, carefully inserted into the swift's mouth, until it weighed 36g. At the end of a week, she held it on her hand by an open upstairs window. After a minute or two the swift flexed its wings, and flew away, hopefully to make a successful migration back to Africa.

## News update

We are excited to announce that we have two new salaried GPs starting in September, Dr Abby Astle and Dr Megan Lamb.

Both doctors bring with them a wealth of experience and will complement the current team of doctors.

FLU Clinics 2023

Please support Nutwood by having your seasonal



vaccinations at the Practice

If you are over 65 or in a clinical risk group and registered at Nutwood, our first flu vaccination clinics are now available to book.

If we hold a mobile number for you, we will send you a text with a self-booking link, however if not you can call us on 01539 715500



### The Local Group of Co-Workers for Mother Teresa

is appealing for goods for the Food Banks at Ulverston, Barrow and Millom

"Over 90% of the food distributed by foodbanks in The Trussell Trust network is donated by the public – that's why your food donations are absolutely vital to our ability to give everyone referred to us a balanced and nutritious three-day supply of food."

"We want to make sure that no-one in our local community has to go hungry, but we need your help to make this happen."

Stocks always low on the following

UHT milk

Long-life fruit juices

Coffee

Tinned potatoes, rice and steamed puddings

Jam

Toiletries

Father Magner Room, St Charles RC Church

1 - 3 pm

**Sunday, 24th September 2023**

PLEASE GIVE GENEROUSLY TO HELP THOSE  
LESS FORTUNATE THAN OURSELVES

Just one extra item each time you shop would be welcomed



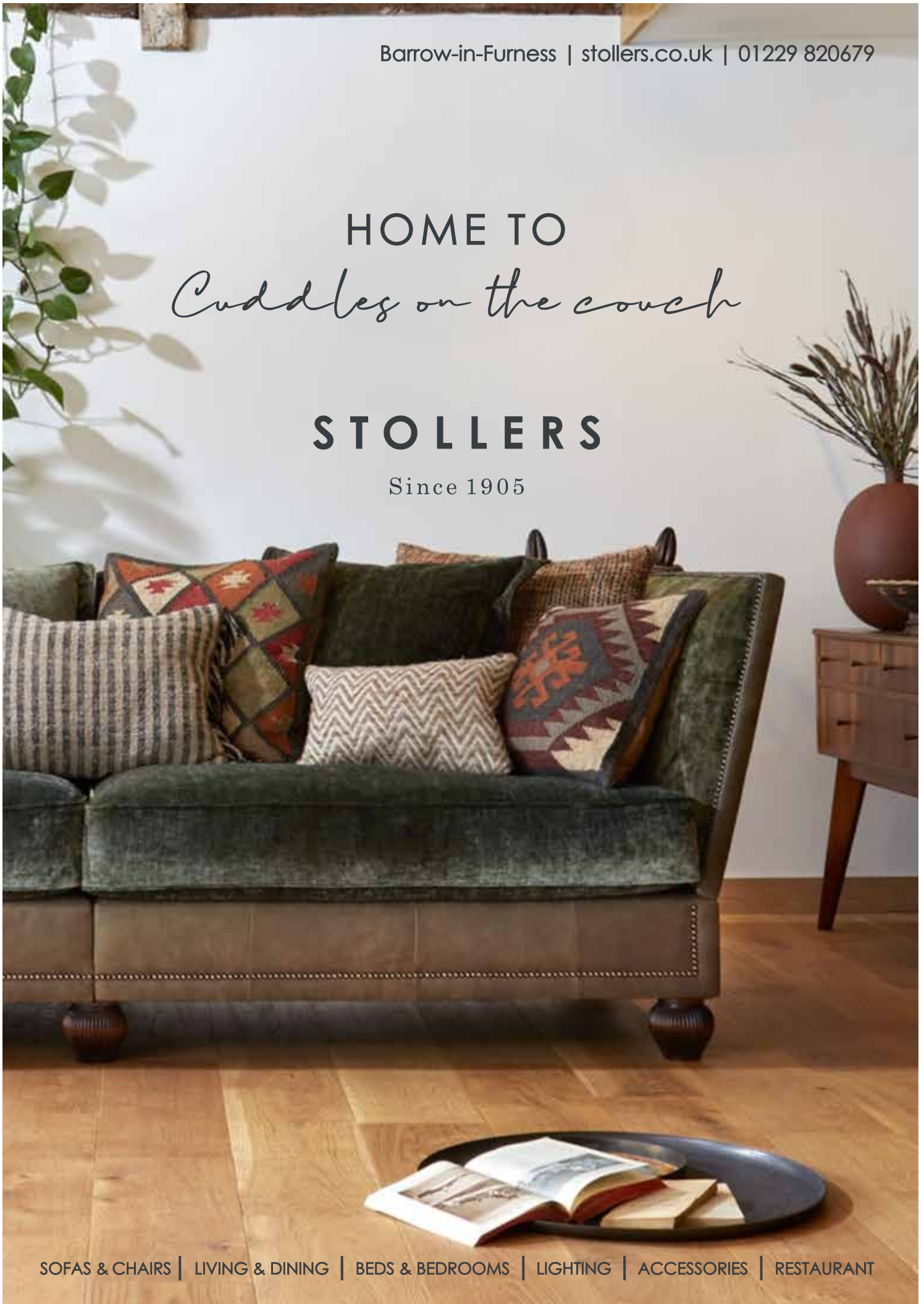


Barrow-in-Furness | [stollers.co.uk](http://stollers.co.uk) | 01229 820679

HOME TO  
*Cuddles on the couch*

**STOLLERS**

Since 1905



SOFAS & CHAIRS | LIVING & DINING | BEDS & BEDROOMS | LIGHTING | ACCESSORIES | RESTAURANT





# CASTLE WINDOWS

Suppliers and Installers of Quality PVC-U  
Windows, Doors & Conservatories

At Castle Windows, we are a family run business of highly respected professionals, who have earned a reputation for providing a fantastic service.



All our products  
and installations  
come with a  
**10 YEAR  
GUARANTEE**

## DOORS

Our qualified and experienced door fitters can advise on suitable types, makes or models for your installation

## WINDOWS

We supply and fit 'A' rated windows for customers throughout Morecambe, Lancaster and surrounding areas



THE  
*Signature*  
COLLECTION<sup>TM</sup>  
WINDOWS & DOORS  
WITH EXTENDED WARRANTIES



Listen out for  
our adverts on



IT'S LESS HASSLE WHEN YOU BUY FROM CASTLE

**T: 01524 841314**

**[www.castlewindowsmorecambe.co.uk](http://www.castlewindowsmorecambe.co.uk)**

Unit 1a Northgate, White Lund Industrial Estate, Morecambe, LA3 3AY



Castle Windows Morecambe



\_castlewindowsmorecambe





## Made in Allithwaite September Fair



Steve Fairhurst

The Made in Allithwaite artisans are busy planning their next event on Saturday 2nd September 10.30am - 3.30pm at Kirkhead View, Allithwaite LA117QF



Glasswork by Fran Brown



Bags by Wendy  
Rings by Rob

It will be held outside so hoping for some good September weather. Art and craftwork includes:-

- Ever popular natural skincare products by Angela Pollard
- An array of exquisitely made bags and knitwear by Wendy Graham
- Beautifully crafted rings by Rob Alder
- Wonderful paintings and cards by Steve Fairhurst
- A range of fused glasswork and painted designs by Fran Brown and possibly more on the day!

As always there will be a delicious selection of homemade cakes and refreshments on offer which can be enjoyed in a delightful garden setting. For further information take a look at the Made in Allithwaite Facebook page or email fusedglass.fran@btinternet.com

## Allithwaite Bowling Club

In July we held our annual Charity BBQ event and this year we were fundraising for Prostate Cancer UK and Breast Cancer Now. Both of these charities do fantastic work in research and to support those affected by these two cancers.

We held a raffle leading up to the event and would like to thank all those who supported us buying tickets. Through our committed band of sellers we sold every one of the 1,000 tickets and had people asking for more!

In addition to bowling, our day included several fun bowling games, a sweepstake, tombola, and several other off the green fundraising games including a very popular 'Balloon Bust' and the BBQ. Our club members were both enthusiastic and generous and all thoroughly enjoyed the day. Our total raised was £2,112 which is by



This is Alan Balderstone this years President of the club with Julia Nicholson the secretary (handing out prizes).

far our most successful event.

We were supported hugely by the donors of our excellent prizes, the donors of all the food for the BBQ and by people making monetary donations. The support given to our event was tremendous, Allithwaite Bowling Club and our two nominated charities are hugely appreciative, thank you all so very much.

## Did you know?

**Penny Arnold, from Grange, is the niece of the composer Sir Malcolm Henry Arnold CBE.**

Her uncle's music was heard in the Victoria Hall in Grange recently when they hosted a classic film night on August 13th, featuring a digitally remastered version of David Lean's Classic British Comedy Hobson's Choice (1954) which Sir Malcolm wrote the music for. He died in 2006

after writing across many genres, and composing nine symphonies, numerous concertos, concert works, chamber music, choral music and music for brass band and wind band. He created music for the theatre and had five ballets specially commissioned by the Royal Ballet, as well as two operas and a musical. Sir Malcolm wrote scores for 132 films, including The Bridge on the River Kwai (1957) which earned him an Oscar.

**Over 50 years service in Cumbria**



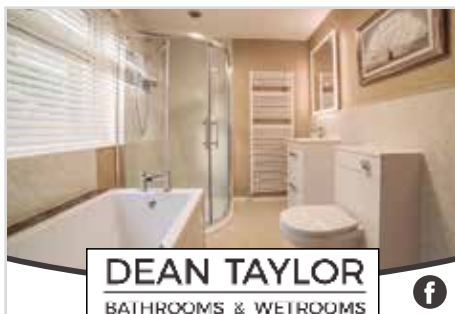
- Experienced, qualified audiologists
- Free home consultations
- Free aftercare plus servicing and repair
- Competitive prices and interest free payment plans
- Microsuction ear wax removal



**Tel 015395 36391**  
**www.stjohnsac.co.uk**



Main Street, Grange-over-Sands



**DEAN TAYLOR**  
BATHROOMS & WETROOMS



#### THE WHOLE PACKAGE

From taps to tiles we cover your whole bathroom renovation!

#### Design - Supply - Install

- Plumbing • Electrics
- Flooring • Tiling



All hassle free with our customer satisfaction guarantee  
Proudly Covering the South Lakes

**01539 821384 / 07841 955357**

info@deantaylorbathrooms.co.uk  
deantaylorbathrooms.co.uk  
1 The Boulevard, Windermere Rd,  
Grange-over-Sands, LA11 6EG

**Clare House**  
Park Road, Grange-over-Sands, Cumbria

Open to non-residents serving:  
Brunch/Lunch, Afternoon teas, coffee,  
tea, cakes and Dinner  
Tuesday to Saturday  
(No dinner Sunday or Monday evening)

Tel: 015395 33026 [www.clarehousehotel.co.uk](http://www.clarehousehotel.co.uk)

## Medieval Cartmel Festival Saturday 30th September

### Medieval Cartmel

Celebrating the Restoration of our Historic Marketplace

**Sat 30<sup>th</sup> Sep 10am - 5pm**

Cartmel's historic Market Pinnacle and Fish Slabs have been showing their age and have been suffering from centuries of exposure to the local weather and general wear-and-tear.

Allithwaite and Cartmel Parish Council have stepped in to rescue these important and listed structures before they crumble away or collapse and, with the aid of Lottery funding, have organised a programme of restoration. This work is nearing completion and will be celebrated with a special event on Saturday, September 30th by the Medieval Cartmel Festival. This festival will include markets around the renovated site in the main Square and in Devonshire Square by the Priory church. There will also be tours of the Priory and its bell tower and around the



Restoration work on Cartmel Market Pinnacle

village's historic centre, and activities will also feature historic re-enactments with wandering minstrels and Cartmel's Black Horses.

Traffic arrangements will be similar to Christmas-in-Cartmel with a one-way system and subsidised parking on the racecourse. Everyone is invited to this special community event with attractions for all ages.

## New active travel hub at the station



New active travel hub at the station to be sited at the old waiting room at Grange-over-Sands Station

### Grange Now Readers invited to support a new active travel hub at the station.

The Old Waiting Room at Grange-over-Sands Station is getting a new lease of life as a 'pop-up' active travel hub from the team at local charity Morecambe Bay Partnership as part of the Ways Around the Bay programme.

The charity, which already operates a free Trammer hire service with local volunteers based at Grange Library car park, has secured a lease agreement with Northern Trains until the end of March 2025. They intend to operate a pop-up facility from the building

providing access to their services and community projects as well as testing the feasibility of an active travel hub to include mobility scooter and E-bike hire.

A suite of itineraries will be developed to provide half and full day rides from Grange to encourage this as a day out option as well as an activity programme of guided rides and walks with accessibility for all in mind, to encourage walking and cycling for health, and opportunities to chat and make friends.

Volunteering opportunities are available to help run the hub. Initially, it will open on an ad-hoc basis with the aim to open at least 5 days per week depending on how much demand there is for the services offered.

The trial is part of Ways Around The Bay, a programme which aims to establish Morecambe Bay as a centre for walking, cycling and exploring the Bay in low carbon ways. The initiative is creating more inclusive access, so everyone can enjoy the Bay's inspiring landscapes, nature, history and culture.

If anyone is interested in the volunteering opportunities at the hub, please email the team at [waysaroundthebay@morecambebay.org.uk](mailto:waysaroundthebay@morecambebay.org.uk)



Here at Promedica24 we provide a dedicated 24-hour live-in care service as an alternative to a residential care home. We firmly believe the old and vulnerable requiring care and support should be able to live well in the comfort and familiarity of their own home, enjoying their independence as much as possible. Our team of well-trained experienced live-in carers live with our clients in a spare bedroom providing peace of mind to both them and their relatives. We take care of the cooking, help with medication, and promise to support personal care needs with dignity. Our team will make sure the home is kept tidy too, after all for several weeks or more your home is their home too. There's no better feeling than knowing you have a friendly carer as your companion day and night. Moreover, our team of professional Care Managers organise all aspects of care, care assessments, changeovers, and are always on hand to offer full support to every client. All our clients can be confident in our quality of care as we are fully regulated and rated 'GOOD'. Importantly we recruit, train, and monitor the performance of all our live-in care team. This way we can ensure that we meet your high expectations for great care and support. It only takes a matter of a week to organise care and all assessments and consultations are without charge or obligation.

Our weekly rates compare very well with Residential Care Homes but the difference is your relative is living in their own home, close to friends and family and also keeping up their treasured contact with their local community.

I look forward to sharing more news with you soon. Best Wishes, Gary

**PROMEDICA24**  
Live-in care and support



# Live-In Care with Promedica24

Continue to live independently in your own home with the support of your live-in carer



Specialist 24/7 live in care tailored to your personal needs



High quality and fully managed 1-2-1 care from fully trained staff



Specialist Support for those living with Dementia, Parkinson's or a disability

**Contact Gary, serving South Lakes and Cumbria**

Gary Derbyshire

07419 111981

[g.derbyshire@promedica24.co.uk](mailto:g.derbyshire@promedica24.co.uk)

[www.promedica24.co.uk](http://www.promedica24.co.uk)

Inspected and rated

Good

 Care Quality Commission

## Mayor's Report

**In the afternoon of 31st July, the Chain came out and I attended the opening of the new children's playground on the prom.**

It is a very impressive structure, with innovative apparatus and a really safe bouncy surface, which should keep kids safe when they fall off the equipment.

There were several kids present to try out the structures and they were having a whale of a time. They also proved that when falling from a height onto the new surface they do actually bounce. Well done W&F (SLDC) for seeing this through. It seems that some cash has been found in the budget to do some renovation work on the shelter, which is looking rather tired. There is a swing which is designed for disabled children but could do with a safety belt when in use. W&F have not left one in place as it seems that, in other locations, they have been pinched. The suggestion is that parents of

disabled children should buy one for their own use and keep for future occasions. Information on where to get one should be available from W&F. As I write this, work has at started on the repair of the water ingress into the front of the Vic. After about six years, we have at last found someone who understands the problem and is taking appropriate steps to fix it. Our current Hall and Services Manager, Amanda, has left us this month for pastures new. She leaves us with some very innovative systems in place, which should see us right for years to come. Thank you, Amanda. On the subject of the Vic, our stalwart support group, the VHSG, is running low on members. Come October, they will need a new Chairman and the number of Committee members available to run events and come up with ideas is getting lower. Joyce Hawksford, one of the founder members, is retiring in September, having run the Bingo for many years. Thanks, Joyce, for all your efforts.

## Grange Prom Play Park Reopens



Reopening of Grange Play Park

**An opening ceremony was held at the park on the promenade on 31st July.**

The park has now reopened for children and youngsters aged from six months up to 15 years old, including a new train engine and carriage for the younger ones to enjoy and a wheelchair roundabout and mirage swing seat for those with additional mobility needs. What used to be the "toddler" end of the park is now a picnic area with picnic tables and a grassed area for families to enjoy the space and great views across the estuary, while all ages play together.

New benches and bins will also be installed in the main play park in the coming weeks. The play park is one of the first major milestones in the £6.8m Grange Lido and Promenade restoration, which started in April.

The whole project, which will see the lido open to the public again with a temporary infill to

the pool to create a new multi-use public space for the local community and visitors, is set to take 14 months to complete.

Since work on the lido and promenade started, main contractors RH Irving Construction have commenced site clearance and demolition work, including demolition of the existing perimeter walls and retaining walls, and started the sea wall repairs and installation of the new drainage system. On the promenade, work on the existing sea wall has started.

More details about the project can be found at: <https://www.southlakeland.gov.uk/business-and-trade/town-and-village-projects/grange-over-sands-lido-and-promenade>

Anybody interested in keeping up-to-date with progress on the project can sign up for regular email updates at: <https://public.govdelivery.com/accounts/UKWFC/subscriber/new> under "Major projects".

## Companionship Cafe

**'Often a good chat and a cup of tea are all it takes to turn somebody's day around'.**

We are delighted to say our next Companionship Cafe will be held on Wednesday 13th September from 1.30 – 3pm at the Victoria Hall.

Getting older can sometimes mean you feel isolated and lonely. Join us and meet other people in our community and enjoy a FREE tea or

coffee with a scone (with jam and cream of course). Our Community Angels and Care Professionals Jill, Shaun, Di, Andrea, Amanda, Sheila and Anna will also be there to chat and offer advice and support about local support and activity groups in the area.

Please call 01539 267220 if you would like more information. There is no need to book, just pop along any time between 1.30 and 3pm.

## Companionship Cafe

**"Often a good chat and a cup of tea are all it takes to turn somebody's day around"**



**Wednesday**  
13th September



**1.30PM - 3:00PM**



**Victoria Hall**  
Grange-over-Sands



**Free tea or coffee and scone with jam and cream!**



**01539 267220**





HOME INSTEAD SOUTH LAKES

# IF YOU CARE FOR A LOVED ONE...

We can provide home  
care that supports  
*both of you.*

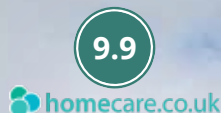
At Home Instead, we understand the challenges, as well as the rewards, of caring for a loved one. We're experts in supporting clients and families, and we will take the time to understand your circumstances to find a solution that works for you and your loved one.

You'll be surprised how much difference an hour or two can make. Our team provides home visits that make a difference to your loved one and support a family caregiver with a break.

---

*"Without any question, we would highly recommend using this care provider to others. They were quite simply outstanding in all aspects and we really appreciate all the support provided both to Mum and all of the family."*

**- Daughter of Client**



- Always the same fully trained Care Professionals
- On time, at the same time
- From companionship or home help, to complex care
- Warm & professional local team
- Dementia and Alzheimer's specialists
- Parkinson's UK partners
- End of Life specialists

**We're here to help from 2 hours a week. Speak with our team about your needs and learn what makes Home Instead different.**



**01539 267220**



[info@southlakes.homeinstead.co.uk](mailto:info@southlakes.homeinstead.co.uk)



Meadowbank House, Meadowbank  
Business Park, Shap Road, Kendal LA9 6NY

## Lindale CE Primary



**We already have some exciting events booked for the children's return to school in September.**

Year 5 and 6 will once again partner up with Selside Primary School for a Leadership Day at Castle Head where they will complete a rich programme of outdoor activities designed to build on skills such as teamwork, confidence, resilience and leadership. They will continue to build these skills over the year through a variety of activities both inside and outside of school.

We are looking forward to taking the whole school to the Westmorland County Show



where they will learn from local businesses.

We have also booked some specialist PE coaches to come into school next year as part of our enhanced PE curriculum. This will begin with KS2 football. Our popular Judo Club run by specialist coach Tracy will also restart in the autumn term.

We are looking forward to welcoming the children back in September and new pupils into reception and nursery. We have spaces in all classes for September; please contact the school if you are interested.

## CINEMA at the VIC

**Sunday 10th September**

### **The Unlikely Pilgrimage of Harold Fry (2023) (12A)**

Harold Fry is an unremarkable man who has made mistakes with all the important things: being a husband, a father and a friend. And now, well into his 60s, he is content to fade quietly into the background of life. Until, one day, Harold learns his old friend Queenie is dying. Harold leaves home, walking to his post office to send her a letter. And out of the blue, he decides to keep walking, all the way to her hospice, 450 miles away. Based on the bestselling book by Rachel Joyce. 'A wrenching examination of grief, guilt and eventual closure' – The Guardian

Doors open 6.30pm, film starts 7pm. Presented in



conjunction with Cine North. Ticket prices: adults £6.50, children £4.50. Rating: 12A Runtime: 2hrs 10 mins including 20 minute interval. Make an evening of it with our fully stocked bar & snacks, ice cream, interval burgers and bacon butties to order, tea and cake. Book Tickets at [www.ticketsource.co.uk/vhsg](http://www.ticketsource.co.uk/vhsg) Credit/debit cards, Apple Pay and Google Pay accepted on the door.

# CARS & CARAVANS BOUGHT AND SOLD

**FAMILY RUN AND DEDICATED TO GIVING YOU THE BEST POSSIBLE PRICE**

**01200 445900**

Deerpark Garage, Gisburn Road (A59), Gisburn, Clitheroe, Lancashire BB7 4ES

[www.smallbonecars.co.uk](http://www.smallbonecars.co.uk)



Smallbone - your car buyers



Gisburn caravans



SMALLBONE





## ALLITHWAITE AND CARTMEL PARISH COUNCIL

### PARISH COUNCIL – VACANCIES

Notice is hereby given in accordance with Section 87 of the Local Government Act 1972 that Allithwaite and Cartmel Parish Council has three vacancies for councillors for Allithwaite. Anyone interested in serving the community in this way and who want to become a councillor for co-option should write to the clerk at: [clerk@allithwaiteandcartmel-pc.gov.uk](mailto:clerk@allithwaiteandcartmel-pc.gov.uk).

### HIGHWAYS – HIAMS

The reporting of potholes or other highway problems is via the interactive website: [www.allithwaiteandcartmel-pc.gov.uk](http://www.allithwaiteandcartmel-pc.gov.uk), scroll to the bottom of the page and under 'Quick Links' click on Report a Highway Problem. Councillor Mark Pendlebury can assist if you need any help, he can be contacted by email [mark.pendlebury@allithwaiteandcartmel-pc.gov.uk](mailto:mark.pendlebury@allithwaiteandcartmel-pc.gov.uk)

### PLANNING APPLICATIONS

Details of all planning applications can be viewed on the Parish Council website: [www.allithwaiteandcartmel-pc.co.uk](http://www.allithwaiteandcartmel-pc.co.uk) and the Westmorland and Furness link to the planning applications of the South Lakes: [www.southlakeland.gov.uk/planningapplications](http://www.southlakeland.gov.uk/planningapplications).

### ALLITHWAITE QUARRY

In May 1978 the Commons Commissioner made a judgement that passed ownership (freehold) of the quarry to the Parish Council. The ownership and stewardship lies with the Parish Council, who has the freehold right to the land, including the responsibility for health and safety. According to the Quarry Regulations 1999 Allithwaite Quarry is not designated as a quarry. Therefore, any accidents/incidents would be a Local authority matter, ie: the Parish Council.

Following safety visits by SLDC environment department, and a professional survey that was undertaken on behalf of the Parish Council, three areas of concern were identified as requiring attention prior to allowing public access. These are:

- Perched rock towards crest of face on left hand side: Unable to

determine the stability as difficult to access.

- Large block of limestone on the upper bench in corner of the quarry. There is evidence of spalling from the face at the toe of the bottom bench. This feature is likely to fail (fall) without warning at some point.
- Large overhanging slab of limestone supported on a pillar of limestone which has been worked on three sides, increasing instability. There is evidence of joints opening up. This feature is unstable and is likely to fail without warning.

The boundary fencing and quarry face work have not yet been completed, despite continued efforts by the Parish Council to resolve these matters. Having been let down by fencing contractors on more than one occasion, the council is currently trying to find a contractor who can proceed with the boundary fence work.

The date on which the quarry will open again is not yet known. The area will remain closed until further professional advice is taken, and any remedial actions taken as necessary.

### ALLITHWAITE COMMUNITY ORCHARD

Residents may have noticed the gate between the King George Playground and the Community Orchard has been temporarily secured. This is due to a number of concerns expressed that a small number of children had gone over on ankles when standing on apples thrown into the play area. Although not a perfect solution it was again decided similarly to last year to temporarily secure the gate to reduce the number of children throwing apples into the area due to the easy access.

The Vicarage Lane entrances to the orchard area are open to parents and children. Apples are still not ready to eat but will be available to eat beginning of August into September/October.

### EMERGENCY ALERTS

People have become aware of the new Emergency Alerts system, which is a UK Government service, but are confused about the intended purpose. The system went live a few

months ago - see About Emergency Alerts - GOV.UK ([www.gov.uk](http://www.gov.uk)) for more information. The system is intended to be an additional alert, to warn of a number of forms of danger nearby, such as fire, severe flooding or extreme weather; they apply to severe situations and will be based on your location at the time.

Emergency alerts will only be sent by the emergency services, government departments, agencies and public bodies that deal with emergencies. When you get an emergency alert your mobile phone or tablet may make a loud siren-like sound, even if it's set on silent, vibrate or read out the alert.

The sound and vibration will last for about 10 seconds. An alert will include a phone number or a link to the GOV.UK website for more information. You'll get alerts based on your current location - not where you live or work. You do not need to turn on location services to receive alerts.

For further information go to: <https://www.gov.uk/alerts>

### CARTMEL FISH SLABS AND PINNACLE RESTORATION

Work has progressed slowly due to the need to source replacement sections of compliant stone as well as interruptions through adverse weather. On removal for repair, one section of the Fish Slabs was found to have an unseen fracture which has meant that too needs to be replaced and with extended ordering, is leading to further delay. It is now expected restoration will be completed in September including placement of an Information Panel.

### MEDIEVAL CARTMEL EVENT - SATURDAY 30TH SEPTEMBER

This full day Community Event running from 10am until approximately 5pm and supported by the National Heritage Lottery Fund, will celebrate restoration of the Fish Slabs and Pinnacle, Cartmel's heritage, and its increasing prominence as a local food producer. Planning is well advanced and will include a range of market stalls, food sales, re-enactments, village tours and entertainment. Make a note of the date.

## St Mary's Allithwaite

**August proved rather wet and cool but this didn't dampen the enthusiasm of our children's holiday club.**

There were Bible stories brought to life through drama and also each child built and hand-decorated a land-yacht, since many of the stories happened around Lake Galilee and on boats! At the end, each child took away a special 'Restoration Box', which they had decorated themselves, full of their prizes, a booklet and various little symbolic gifts attached to slips of paper reminding the children of what they had learned about Jesus. The box also contained two cup-

cakes each, which had been enthusiastically covered by the children with chocolate spread, smarties, jelly-tots and sprinkles!

September sees some regular activities in church starting again. Please do come along to the Community Lunch on Wednesday September 20th, which will be a fund-raiser for Macmillan Cancer Support. Sandwiches and homemade cakes will be served in church from 12 noon until 1.30pm. Our lunches are open to all and take place on the third Wednesday of each month, free of charge, any donations are welcome but not obligatory.

## St. Paul's Grange

**At the end of July members from six churches across the peninsula came together for a joint service at St Mary's Haverthwaite to say goodbye to the Brewster family, at Jonathan's last service with us.**

It was lovely to see so many people in the church for a joyful service with some splendid singing. Although it was sad to be losing the family they are embarking on a new exciting life as Jonathan takes up his post as Dean of Carlisle Cathedral. Obviously we didn't have an 11am service in St Paul's that day but we did have a 6pm service with an Ecumenical Songs of Praise. This was very popular with about one hundred people in the congregation, all singing

their hearts out, with the help of a wonderful choir. The service was led by the Reverend David Edmondson with contributions from all the other churches in Grange.

July of course brings our Grange School leavers service and it was wonderful to see the church full of children and parents. We listened to the year six children tell their memories of their time at school. Each pupil had painted their favourite value of love, hope or trust on to a stone and during the service they brought them up to the front to build a cairn. Margaret Radcliffe from church presented each of the leavers with a friendship bracelet and card which had been made by members of our church craft group.

Another popular event was a Seasonal Tapestry of Words and Music by Audrey Gorman and Charles Edmondson.

## St. Charles' and St. Cuthbert's

**Greetings and best wishes to all readers. This has been a relatively quiet month, I think it must have something to do with the school holidays.**

There have been fewer than usual children in the Sunday children's liturgy classes, and some of the societies have had a bit of a rest from their usual activities. Although we have been raising monies for various causes. The SVP have held their summer raffle, selling tickets outside church for a couple of weeks. Many thank to all who bought them, and we hope one of our congregation wins the first prize of £5,000. In Milnthorpe, our sister church raised money for the LEPPA society.

Also, the normal life of the church goes on, holidays or

no holidays. We have mass at 10.00 am on Mondays, Tuesdays and Saturdays, and on Wednesdays, also at 10.00 am, we have Eucharistic services, taken in turn by four of our Eucharistic ministers. On Thursdays and Fridays, guess when, yes 10.00 am, we have extended prayer of the church, followed on Thursdays by rosary, and on Fridays by Eucharistic adoration. Between these times, the church is open all day for private prayer.

Feel free to call in, if you just want to sit quietly amidst the hustle and bustle of everyday life. It is a quiet, restful place to sit, and a most beautiful building to visit. Maybe I will see one or two of you there sometimes, you will be most welcome.

## Cartmel Methodist Church

**All visitors to Cartmel Methodist Church are assured of a warm welcome, and during the summer we have welcomed holiday makers and locals to the church.**

Sunday services are 11.00am to 12.00noon. The church is open from 10.00 to 4.00pm to look around or for quiet contemplation.

We are looking forward to our harvest festival service on the 24th September, which is always a special celebration. Long gone is the time when we gave home grown fruit and vegetables, but we still thank God for our food and that we are able to share. All the products received for the thanks-giving service are donated to the food bank in Kendal.



**Little and Caine**  
FUNERAL DIRECTORS

Our family looking  
after your family

Grange: 015395 33550  
Also at  
Barrow, Dalton & Ulverston  
[www.littleandcaine.co.uk](http://www.littleandcaine.co.uk)

**DALTON**  
WOODLAND BURIAL GROUND

**Natural Woodland  
Burial Ground**

*"Return to the Earth, naturally"*

[www.daltonwoodlandburial.co.uk](http://www.daltonwoodlandburial.co.uk)  
Burton-in-Kendal  
**01524 782442**



**Saunders & Son**  
— Funeral Directors —

Established over 100 years  
Tel 015395 32566 | 07580 863585  
24 hour availability

[liam@saundersfunerals.com](mailto:liam@saundersfunerals.com)  
[www.saundersfunerals.com](http://www.saundersfunerals.com)  
Now providing Golden Leaves Funeral Plans




**Alan Postlethwaite**  
FUNERAL DIRECTOR

Independent family firm - Complete funeral service  
Private Chapel of Rest - 24hr Availability  
- Golden Charter funeral plans arranged

**Golden Charter**  
Smart Planning for Later Life

015395 33040  
Windermere Road  
Grange-over-Sands,  
Cumbria LA11 6EG

[www.alanpostlethwaitefuneraldirector.co.uk](http://www.alanpostlethwaitefuneraldirector.co.uk)





## United Reformed Church

Well, we have had a rollercoaster of a summer so far, with a heat wave, storms, floods and everything in between. However, there should be a bit of time left so hopefully the September Fellowship walk around Witherslack on 14th September should be pleasant with autumn colours starting to show.

We also look forward to celebrating Harvest with our Methodist friends on the weekend 15th to 17th September.

We are trying to be a 'greener' Church and as part of this, we have 'twinned' our church garden with one in Africa through the Charity 'Ripple Effect'. For a small donation, they organise training for the local people to cultivate suitable crops in an area affected by climate change. Any organisation or individual can support this work. Just contact the 'Ripple Effect' website for details to find out how to join in.

Take care, Margaret Popper

## Grange Methodist Church

**Thank you to everyone from the Grange community who came to the Knitted Bible exhibition and left us such lovely comments.**

If you weren't able to get to it, we have made a video of it for which our minister, Rev Jo Rand, has done a thoughtful commentary. The link to it can be found on our page of the Circuit website ([www.slakesmethodist.org.uk/grangeoversands.htm](http://www.slakesmethodist.org.uk/grangeoversands.htm)) where you will also find more information about our church, including our weekly update and monthly newsletter.

As we move into the autumn, we look forward to being open for the repair café on the first Friday of the month – do come along between 6-8 on Friday, September 1st. Toast Church starts again on September 3rd – come along from 9:30 on term-time Sunday mornings. This is a friendly and relaxed group aimed at children of any age and their families. As the name suggests, we eat toast (and cereal). We also sing, share stories, enjoy art, crafts and other fun activities and explore current issues in a family friendly way. All welcome, nothing to pay. Some of the older young people are looking forward to going to 3Generate in October with their leaders. This is the national annual gathering for Methodist young

people, held in Birmingham.

We are delighted to be celebrating Harvest jointly with our friends at the United Reformed Church, with a Harvest Supper at the URC at 6:30 on Friday, September 15th (tickets £6, available from each church) and a Harvest Thanksgiving service at the Methodist at 10:30 on Sunday, September 17th, led by Rev Jo Rand.

All are invited to join us in the church hall for a quiz evening with hot supper on Friday, 29th September at 6:00 p.m. Tickets are £10, including hot supper and a pudding, in aid of our redevelopment project. Come and join in this fun quiz, bring a friend or a team of friends – 4-8 people in a team. Or come on your own and we'll make teams up on the night. Tickets are on sale from Pam Brook (34241).

On Saturday, September 30th we are hosting an Open Morning from 10:00 on behalf of the Churches Together Youth Trust, to enable everyone to meet the new Community and Youth Leader, Andrea Mason, talk about future plans and share refreshments together – all welcome.

**PARLIAMO ITALIANO!**  
Italian conversation classes  
at the Victoria Hall  
Beginners Thursdays from 2nd November 7-8.30  
Improvers (Yr 2) Tuesdays from 3rd October 7-8.30  
£45 for 6 weeks / £9 per week drop-in  
Contact Caroline 07815 952055 [caroline\\_hakkeen@mac.com](mailto:caroline_hakkeen@mac.com)

## Churches Together

**Thanks to everyone, locals and visitors, who joined us for "Praise on the Prom" in July and August.**

The next planning meeting will be at 7:00 on Tuesday, September 19th at St. Mary's, Allithwaite.

## Thursday Morning Concert

The 11th series of Thursday morning concerts continues at St Paul's Church, Grange-over-Sands on Thursday 14 September, starting at 11am., with a recital of organ and piano music and will be given by the church's organist, Charles Edmondson.



Charles Edmondson at the console of the Four Manual Organ

Charles' programme, as usual, contains a wide variety of pieces starting with a Pastorale in four shortish movements by Johann Sebastian Bach and concluding with a sparkling Toccata in G by the French organist and composer, Théodore Dubois.

Pieces included In between, will be a piano sonata by the Viennese composer Franz Joseph Haydn and a Waltz by Polish composer, Frederic

Chopin.

Tea, Coffee and biscuits will be available before the concert from 10.30 onwards. Admission is free to the recital but donations are welcome and these will go towards the maintenance and tuning of the instruments.

**WILSON ROBINSON**  
2 Birchleigh Terrace, Kents Bank Road,  
Grange over Sands 015395 32894  
[wilsonrobinson@btconnect.com](mailto:wilsonrobinson@btconnect.com)

**Warmth underfoot this winter**  
Wilson Robinson for all aspects of domestic and commercial flooring.  
Samples to your door service.  
Penthouse Carpets. Axminster. Cormar. Telenzo.  
Victoria. Crucial Trading and many more..

## Thirty years of fine art and craft in a magical setting at Witherslack



Pip Hall – stone letter carver

**Twelve of the region's best artists and makers plus three special guests will be exhibiting and selling their work in the Witherslack Artists and Makers Group exhibition this year.**

The 2023 exhibition opens in the Dean Barwick Hall at Witherslack on Saturday 23 September and will run for just over two weeks to Sunday 8 October.

Regular members include ceramicists, Alvin F Irving and Hans Ullrich, and chair maker, Paul Girling as well as ceramicists, jewellery and basket makers, leather, stone and glass workers and several artists and printers. As well as diverse new work from regular members, the 2023 exhibition will also showcase the creative skills of three guests: ceramicist, James Hake, landscape artist, Ben McLeod and knitwear designer, Kate

Stalker of OUBAS.

The Barwick Hall venue is alongside St Paul's Church near Halecat Nurseries and up the hill from the Town End of Witherslack. There will be signposting from the A590. The exhibition is open for two weeks, starting on Saturday 23 September and running until Sunday 8 October, open every day from 10am to 5pm.

Further information about the Witherslack Artists and Makers Group exhibition and all the participating artists and makers is on the website at [www.witherslackartistsandmakers.com](http://www.witherslackartistsandmakers.com).

**The photos are the work of three established members of the Witherslack Artists and Makers Group**



Alvin F Irving – ceramicist – Primavera



Fiona Clucas – wildlife and landscape painter - Hydrangeas, Glenwan Garden, Galloway

JAMES HAKE \* BEN MCLEOD \* JO VINCENT \* OUBAS KNITWEAR \*  
**WITHERSLACK**  
 ARTISTS & MAKERS GROUP





**OLD SCHOOL ROOM  
WITHERSLACK**

**SATURDAY 23 SEPTEMBER  
TO SUNDAY 8 OCTOBER 2023**

**OPEN DAILY 10AM-5PM**

\* **FINE ART AND CRAFT** \*  
 \* **IN A MAGICAL SETTING** \*

BARWICK HALL (NEXT TO CHURCH), WITHERSLACK,  
GRANGE-OVER-SANDS, LA11 6RS

**ADMISSION FREE - ENQUIRIES: 07787 075544**

**Cartmel Priory**



## La Serenissima The Four Seasons

& other works by Vivaldi, Brescianello & Dall'Abaco

*"...a unique version of The Four Seasons ...an avant-garde approach that would have awed Hendrix."* The Guardian

**7:30pm, Saturday 23rd September  
Cartmel Priory**

Tickets from £20 available at [www.laserenissima.co.uk](http://www.laserenissima.co.uk)  
or from the Cartmel Priory Shop.

La Serenissima: Company no. 8370390 | Charity no. 1154940





## South Cumbria Musical Theatre Choir

**A touch of the West End is coming to South Cumbria, thanks to a local singing coach, who has put out the call for enthusiastic singers to join her.**

Grace Heap, originally from Grange-over-Sands, has enjoyed a career as both a performer and professional Vocal Coach, and is bringing Sing Space's South Cumbria Musical Theatre Choir to Ulverston.

This adult choir is open to all, from those who consider themselves complete beginners (but would love to give it a go!), to experienced vocalists and seasoned professionals. Everyone is welcome! We are looking for keen singers who love Musical Theatre, and want the chance to work with a professional Voice Coach whilst enjoying "belting out show-tunes together". Sing Space make sure their arrangements suit all: whether you want to sing the melody line in the comfort of a crowd,

or take a complex harmony or solo line.

Launch day will be 21st September at 7:45pm. Rehearsals will be held at Croftlands Community Centre, in Ulverston, Cumbria and the choir will meet weekly for 90 minutes. Members will be given the opportunity to take part in local performance events throughout the year and members who have secured their seat before 1st September will also be given the opportunity to register for the chance to sing with Gareth Malone, OBE, on his tour and in the West End this year.

The choir will be singing hits ranging from popular Musicals like Les Mis, West Side Story and Mamma Mia as well as discovering new material.

The termly fee is £125.40 for 12 x 90 minute sessions and members can divide this fee into 3 equal payments to help spread the cost. Booking is essential as choir seats are limited.



**BRINGING THE WEST END TO SOUTH CUMBRIA**

Open to all adults. Email [grace@singspacechoir.com](mailto:grace@singspacechoir.com) to secure your space.

## K Shoes Male Voice Choir



**K Shoes Male Voice Choir and our Musical Director Michael Sanderson would like you to join them in a Celebration of Friendship concert at Victoria Hall, Grange over Sands on Friday 29th September in support of St Mary's Hospice, Ulverston.**

There will be a varied programme featuring music spanning 400 years, from 6 different countries and every type of genre including modern ballads, folk songs, sea shanties, hymns, anthems and classic show stoppers. We will also have some sing along numbers which we hope everyone will join in and raise the roof.

We have chosen the theme of friendship because this is what kept the choir going through the difficult times. Back in late 2018, when we celebrated our 50th anniversary, little did we know the challenges we would all face over the next three years and

how much we would need our friends and neighbours to help us carry on. We are now back, fighting fit and ready for another 50 years of singing.

We will be donating half the proceeds from the concert to St Mary's Hospice as a thank you for all the help and support they have given to our community.

Tickets are £11 in advance and can be bought from St Mary's Hospice Charity Shop in Grange over Sands or on line at <https://www.trybooking.com/uk/CPFA?qr=true>. Alternatively £12 on the door (cash only).

The Mayor of Grange over Sands, Cllr Roger Handley will be joining us. The doors open at 7pm for drinks and a raffle (so bring some cash!). The concert will start at 7.30pm.

We look forward to seeing you there and don't forget to bring a friend or two!

## Grange Over Sands & District Concert Club



**Concert goes on Friday August 18th were treated to a dazzling display of virtuosity and musicality from rising stars violinist Charlotte Saluste Bridoux and pianist Joseph Havalt.**

Having played at many prestigious venues across the country they were delighted with the fine acoustics of the Victoria Hall and felt very much at home playing to a warm and receptive but, sadly, small audience. They played works by Schubert, Clara Schumann, Ravel and Romanian composer George Enescu. The programme chosen was beautiful, lyrical, emotional and exciting. It was a show case for the outstanding technical wizardry of both these young musicians. Their attack, mastery of complex quickly moving passages, finesse of phrasing, delicacy and empathy for each other had the audience clamouring for more.

Our next concert is on Friday September 8th 7.30 in the Victoria Hall. It will be given by

"Classico Latino" a quintet of musicians; vocalist, piano, violin, cello and double bass. They will perform music that is a unique and sunny fusion of Latin and Classical music and is fun and pleasant to listen to. Their leader is also the Director of Music at Emmanuel College Cambridge and St John's Voices Cambridge.

## Cartmel Choral Society



**Come and Sing ... free taster session, Cartmel Choral Society, Monday 18th September 7.15pm, Cartmel Village Hall.**

Do you enjoy singing? Ever thought about joining a choir? Want to dip a toe in the water? Come and find out more about Cartmel Choral Society at a free taster session to be held on Monday 18th September, 7.15 pm in Cartmel Village Hall. The choir offers a warm welcome to all, no auditions to join and the ability to read music isn't a prerequisite. Can't make the 18th? You are very welcome

to drop in to any of the choir rehearsals. Full details of the Society can be found at [www.cartmelchoral.co.uk](http://www.cartmelchoral.co.uk) or contact chairman Jim Kitchen on 015395 35306 Autumn term rehearsals begin for the choir on Monday 11th September at 7.15 pm, with registration from 6.45pm. Fees for the whole term are £40. In the December concert the choir will sing Charpentier's Messe de Minuit (Midnight Mass) along with traditional Christmas carols. The date for your diary is Sunday 10th December at 3.30pm, Cartmel Priory.

Free design service and complete project management for your peace of mind.

*Carl Graham*  
INTERIORS

### Quality Kitchens, Bathrooms and Bedrooms



#### Opening Hours

Monday - Friday 9am - 5pm  
Saturday 9am - 4pm

#### Contact our friendly design team

Tel 015395 83695

Email [info@carlgrahaminteriors.co.uk](mailto:info@carlgrahaminteriors.co.uk)

Find Us Milnthorpe Memorial Hall,

1 The Square, Milnthorpe LA7 7QJ

[www.carlgrahaminteriors.co.uk](http://www.carlgrahaminteriors.co.uk)

f carlgrahaminteriors

## Fused glass taster classes for Autumn

Perhaps you'd like to have a go at making a small fused glass panel or fancy making your own Christmas decoration this year?

Fran Brown is offering two hour fused glass taster classes in Allithwaite. For groups of two to four people in a fun and relaxed setting. Classes can be arranged during the week or at weekends to suit.

The class involves: - the use of glasswork tools, practice cutting glass, creating your own design using an array of different coloured glass.



Each piece will then be fired in a glass kiln and ready to collect or be delivered a few days later. Cost: £25/ person (+ a small charge for materials) For further details and to book places please contact Fran

Email: [fusedglass.fran@btinternet.com](mailto:fusedglass.fran@btinternet.com) or phone 07786 783936

## "Murder in Play" Grange Drama

**Grange Drama returns to Lower Holker Village Hall with "Murder In Play", a comedy thriller by Simon Brett. 7.30pm Wed-Sat, 1-4 November 2023**

Director Ian Wilson, after a recent audition reading, has his MIP cast in rehearsal for this Simon Brett comedy thriller which can be described as of the mystery genre & with leanings to farce. Written as "a play within a play" the wide range of character parts & the in-built laughter factor will certainly brighten up the mood of a winter evening for audiences & actors alike. Watch out for more production news on the Grange Drama Website & Facebook Page, look up the MIP photo gallery by David Pheasey & most importantly find Box Office / On Line Advance Booking Information. This month the first of two Autumn Community Play Readings takes place with Carol Williamson in the director's chair. Everyone is looking forward to returning to a script by one of Grange's favourite playwrights & no doubt some reminiscing over our past AA productions, all fourteen of them, will occur as well.

**A play reading in the green room, Grange Institute of**

**Absent Friends by Alan Ayckbourn 7.30pm Tuesday 5th September**

Written in 1974 this play is set in the lounge of Diana & Paul's house. Diana has organized a tea party for Colin, an old friend of her husband Paul. Colin's fiancée has recently drowned & the aim is to cheer him up with a gathering of old friends Paul, John & Gordon. To quote the director, "it is a typical Alan Ayckbourn scenario, very much of its time, with the six characters gathered together for a social occasion & yet failing to communicate on a meaningful level. There is a laugh out loud humour – but with the sense of an underlying tragedy & pathos". Why not come along & join in with a Grange Drama Community Theatre Event – you can listen, read, browse or simply reminisce over a cuppa. However, don't worry if you cannot get to this reading &, in the words of Corporal Jones in Dad's Army, "don't panic," as a second reading is planned in Grange Institute Green Room on the run up to Christmas with **Miss Marple's Christmas Present by N Mason 7.30pm Thursday 30th November**



## News from the Library

### Wordsworth Grasmere

Presenting two family workshops Friday 1st September - A Rucksack of Rhymes at 2-3pm (0-5s) and To The Lakes: Tourism in the Lake District at 3-4pm from 1770 (4+). Book by scanning the QR code on the posters in the library. If you require help with this, please ask.

### Storytime

IS BACK! Thursday 7th September 10.15-1.45 (weekly during term time). Come and join in with your toddlers in stories, songs and rhymes.

### Summer Reading Challenge 2023 Ready Set Read!

Approximately 60 children participated this summer, which is a fantastic effort. We loved seeing so many children on the library and talking about favourite books and authors. Keep popping in once you return to school.

### Exhibitions

Brian Ogden's exhibition runs through to Friday 8th September, so if you haven't had chance to see his stunning wildlife photos, especially the golden eagle, there's still time. Opening hours as normal library hours. We've loved hosting

such diverse exhibitions by different local artists. Thanks to all local artists who have displayed their creations here in the library. It makes for a brighter and more interesting space and we have appreciated your skills and talents, as have those who use the library. If you'd like to take the plunge in exhibiting your creations, either as an individual or as a group, chat to us in the library and book your space.

### Book Challenge

This month's challenge and display is themed around "A book by a female author never read before". Only four months of the challenge to go.

Mindful Colouring resources are available on Saturday mornings. Computers are available for free use and advice to the extent of our own knowledge and expertise, also printing and photocopying facilities at a small cost.

Free to access drop-ins

### Grange Now Team:

Thursday 14th September 10am-12pm.

For further information contact Grange library: Tel 015395 32749

Opening: Mon-Fri: 10am-5pm, Sat: 10am-1pm

If you would like to hand in notices or adverts, come and see Grange Now in person at Grange Library 10am - 12noon on 14th September

The next Grange Now deadline 15th September

## St. John the Baptist Church Flookburgh *present*

Flookburgh Band in Concert  
Saturday 30th September, 7pm

Tickets £10 from: Jean Platt 36417 Amanda Kay 58851  
Cockles Store, Flookburgh Square



# Property Talk

With

**Craig Turner**  
Property Department Manager  
and Valuer



## FRIENDLY HONEST PROPERTY ADVICE

### Are you proactively searching for the right agent?

Lethargy is a dangerous trait. When something becomes too easy the drive to perform disappears. The need for hard work and perseverance is lost when results are handed to you on a silver platter. And once you find yourself in that place complacency sets in and it becomes difficult to react effectively to any changes around you.

Since 2020 the property market has been a veritable feeding ground for agents of all shapes and sizes. With property selling in a matter of days, if not hours, the sales process was a foregone conclusion. With numbers soaring, in both sales and values, the fight for 'new to the market' property inevitably dissolved into fee wars. He who charges the least hopes to get the most.

So, some agents weren't working for the instruction and weren't working for the sale. It had all become too easy. Lethargy set in.

Proactivity is an admirable trait. Always active. Aware what needs to be done before it's too late. Happy to compliment the basic with the additional. Willing to go the extra mile or put in that extra bit of effort.

This year has seen the settling of the property market. The return to what we knew and what seems like a dim and distant past (even if it was only 2019). A balanced market where simply just listing a new property for sale does not necessarily guarantee a sale.

What we need now is an agent who has successfully sold property for decades, not just the last couple of years. Agents who know that a normal market requires that little bit more and is willing to go beyond the basic approach. In steps proactivity.

Poole Townsend have always prided ourselves on our proactive marketing approach to selling property. Coupling our local knowledge and traditional sales approaches with a progressive attitude to marketing. Speaking to clients and visiting properties for sale whilst embracing digital marketing and social media. An approach which has seen us constantly top the annual sales figures over the past 20+ years in our area.

We are back in a market where sitting on your laurels and expecting the buyers to jump into your net is not a realistic or successful approach. A market where experience and a proven track record of sales in all differing markets is a must have. A market where proactivity is needed and lethargy needs to be left behind. A market Poole Townsend are proven to be the best in!

  
**POOLE  
TOWNSEND**  
Property

For PROPERTY advice call us  
FREE on 015395 33316  
or visit our website at  
[www.pooletownsend.co.uk](http://www.pooletownsend.co.uk)



Poole Townsend are Independent Financial Advisers  
authorised and regulated by the Financial Conduct Authority.  
Regulated by the Solicitor Regulation Authority No. 00076553.

### Allithwaite Ladies

Home made biscuits were not the only temptations to attract a lively group of ladies to the Community Centre at Allithwaite, on Thursday morning. Over the chink of crockery, the hum of excited chatter could be heard as members of the late Allithwaite WI had a happy reunion. Thanks are due to all the biscuit makers, but thanks specially to Glenda and Carol, our very special hostesses.

### Grange Forum

Unfortunately the trip to see Hamilton in February has been cancelled due to the lack of support by the time the tickets had to be paid. The FORUM season starts on October 10th. The documentation will be sent to members the week commencing the week beginning 4th of September. Enquiries from non members please contact either 33696 or 33057

### Mothers & Others

Mothers & Others are pleased to be starting a new season. We are a group of ladies who meet fortnightly on Tuesday evenings in the Father Magner room behind St Charles' Catholic church on Kents Bank Road. We have a wide range of speakers & activities planned for this season, always followed by a cuppa & biscuits and a chance to enjoy a chat with each other. Membership fee is £15 with a meeting charge of £3, or £5 for visitors who are always made very welcome. Our first meeting, on Tuesday September 5th, at 7.30 p.m. will be "Puzzles & Puddings", a fun pudding related quiz followed by a selection of delicious puddings to sample. On September 19th we are looking forward with great interest to a talk & demonstration on "Wool spinning" by Elaine Ware, starting at 7.30 p.m. We are a very friendly group and look forward to seeing both familiar and new faces to our meetings in September. Telephone Ann on 015395 33856 or Mavis on 015395 33860 if you would like further details about our group.

### Cartmel Art Society

The Summer Exhibition was held mid August, showcasing the work of nearly 20 members of the Art Society in a variety of mediums. The exhibition drew visitors from local residents to holiday-makers, and was well received by all. September brings the resumption of fortnightly meetings, led by fellow member Kev Bell demonstrating Drawing Architecture. Members are encouraged to get out their pens and watercolours and have a go at something that may challenge their normal subject matter. It's sure to be a fun and lively meeting.

The second meeting of September

is a full day workshop with local artist Ben McLeod, demonstrating Seascapes in oil or acrylic. Ben is making a welcome return to Cartmel and is sure to attract many of our members, so please book your place to ensure that you don't miss out!

If you would like to be a part of a group that welcomes budding artists from beginners to more advanced artists please get in touch via our Facebook page or our website: [cartmelartsociety.co.uk](http://cartmelartsociety.co.uk) If you're not sure if it's for you, then please come along to one of our morning meetings and have a chat with any of our friendly and welcoming members who will be very happy to answer any of your questions.

### Grange Cancer Support

When a patient is finished with operations, treatment and hospital appointments they usually have all the medical information they need, and now just need a friend who understands what they have been through. That's where we come in.

If this is you, we can support you by listening to and sharing your experiences – as little or as much as you wish.

We are linked to Cancer Care at Barrow and if a person feels they would like some massage or reflexology or any of the other services on offer at their Barrow premises, they can use them.

We meet every Friday 2pm to 4pm, in Father Magner room – which is accessed by the ramp at the side of, St Charles Church, Kents Bank Rd, Grange-over-sands.

If you want more information please ring Marie on Grange 33279

### Cartmel and District Flower Club

Our next meeting is on Monday 18th September at Cartmel Village Hall at 2.00pm. Our demonstrator

Is Catherine Barnes from Preston with "Tree-mendous". Members and visitors are all welcome so please bring a friend for refreshments and floral raffle prizes.

### Grange Garden Society

I write this having just returned home from visiting Bob Sutcliffe's garden in Witherslack and what an enjoyable afternoon, looking at a fascinating garden, packed full of colour and variety.

Bob told us about how he and Jan had bought the house, with an orchard and mainly lawned garden, 20 years ago and we saw how much the newly planted trees and shrubs have grown in those years.

Bob answered our many questions as we walked around and then we

enjoyed beautiful scones and tea, very kindly provided by Jan. The afternoon was much appreciated by us all.

We gave a donation to Bob's charity, The Creative Health Trust UK.

Our next meeting is on Friday 15th September at the NEW TIME of 2.0pm at the URC, Kent's Bank Rd. ( Refreshments at 1.30). The speaker, one of our members, Dougie Patterson will be talking about photosynthesis. Do come along, visitors are always welcome.

### Grange and District Photographic Society



The Society will meet fortnightly in the Methodist Church Hall during the autumn. The meetings will take place on Monday afternoon at 2pm. Admission is £4 including tea/coffee and biscuits. The autumn season starts 2nd October with Boyd Harris' personal view of history through photography. Two weeks later, on 16th October Professor Paul Salvesson will give a talk on Lancashire culture and identity past, present and future covering Lancashire's mill, mines and minarets. He will cover Lancashire's great achievements in arts and industry.

On 6th November Seppo Hakkinen talks about photography as a visual art. He explores ways to go beyond traditional technical photographic "rules". How to find the essence of your subject with creative thinking. The presenter for 20th November had to cancel on medical advice. Details of the replacement will be announced at a later date. Alan & Julie Walker present their part 6 of Nature Photography on 4th December. They cover Yellowstone and Alaska and their black bears and black throated divers. They will also show birds from Minnesota, US.

### Repair Café

After our summer break, the Peninsula Repair Café will be open again on Friday, September 1st at Grange Methodist Hall, 6 – 8pm, with our usual enthusiastic bunch of repairers covering a range of skills in wood, metal, electrics and textiles. Bring along any tired or broken items and we'll do our best to get them back into working order. Why waste money on buying new when you can give an existing item some extra life? Enjoy a cuppa and some delicious home-made cake, chat to the repairers and soak up the friendly atmosphere while your item is repaired. If you've not visited our repair café before, come and see for yourself why people who have been are so complimentary about what we offer.

### Peninsula Environmental Action Together

PEAT (Peninsula Environmental Action Together) have been busy all summer, making plans for an eco extravaganza this autumn. We hear a lot now on television about many issues surrounding climate change, habitat loss and pollution, but what about the solutions that there might be to these problems? How can we find out what the key issues are and how can we all help to keep our world healthy and sustainable?

On Thursday, Oct 12th, PEAT is holding an eco fair at the Victoria Hall, Grange, from 10am – 4pm. There will be a wide range of stalls, talks and representatives from organisations such as Cumbria Wildlife Trust, the RSPB and Cumbria Action for a Sustainable Future that you can chat to, plus there will be hot food and refreshments and activities for children. Look out for more details and publicity nearer the time. Entry will be free.

### Lower Holker Village Hall

August 200 club winner are 1st £40.00 67 Suzanne Allsworth, 2nd £25.00 54 Ellie Lowery, 3rd £15.00 114 Janice Carrick, 4th £10.00 120 Marian and Wilf Hadwin. Tai Chi, Yoga, and Dancing, start again in September. For Aerial Hoops, contact the Hall. Thursday is Badminton/Table Tennis day. Badminton 9.00am to 2.00pm and from 3.30 pm to 9.00pm. Table tennis from 9.00am to 9.00pm. Cost is £1.00 per player for the booking. Anyone wishing to play contact the Hall. Sewing Machine Classes every Friday morning 10-12pm. £15.00 per session, bring your own machine. Whether you're into Crafting to Dress making, join and learn a new skill!! Contact Natasha on [Natasha127@outlook.com](mailto:Natasha127@outlook.com) or 07901751197. Craft Fair Saturday 28th October, tables £10.00, contact Rhona on



r.barton5353@gmail.com to book. Bowling Green now open and open to the public as long as competition/match not in progress. Suitable footwear essential and cost per player is £2.00 which should be placed in Honesty Box. There are numbers available for the 200 Club, contact the Hall. Please follow us on Facebook at lowerholkervillagehall for all our latest news. Website is lhhv.co.uk. The Hall number is 015395 58304 (with ansphone)

### Grange Soroptimists

In late July four members attended the Soroptimist International Convention in Dublin meeting up with Soroptimists from 68 different countries and exchanging ideas and hearing inspiring keynote speakers including Mary Robinson the former President of Ireland talking about Climate Change,

Eleven Members enjoyed a walk in the sunshine on the Biggar Bank Multimedia Trail on Walney learning about local history, wildlife and hearing poems and music. It was a sociable and interesting morning followed by a delicious late lunch in a member's garden.

Our Garden party on 16 August in Cartmel was blessed with lovely weather and we made over £500 for charity including Barrow Women's Centre. Thank you to all those who

supported the event by attending or donating items or money.

Anyone interested in joining the club or getting further information on our work please see our website [www.sigbi.org/grange-over-sands/](http://www.sigbi.org/grange-over-sands/)

### Grange Probus Club

Grange-over-Sands Probus Club's welcomed Mark Newbrook who spoke on the subject of "Nutters I Have Known". He started by explaining that his Nutters essentially were independently-minded thinkers who were prepared to challenge conventional views in their fields of interest. Mark's own speciality was Linguistics which had fascinated him from an early age. He described how many current languages probably had originated in Central Asia and had developed through Ancient Greek and Latin into their current forms. Invasions and population movement had also played an important part over the ages in spreading and influencing languages. The Club's next event will be on Monday, September 11th at 10.30 for 11am at the Netherwood Hotel when Roger Bingham will talk about "the History of Grange-over-Sands". Grange Probus welcomes retired people as new members and meets on the second Monday of each month for a talk, other than June and December for luncheons

and March for its AGM. Further information is available from the Secretary, Dr Neil Martin at [neilandval1@gmail.com](mailto:neilandval1@gmail.com) or 07985 375511.

### Cartmel Peninsula Local History Society

Cartmel Peninsula Local History Society concluded its summer break in the lecture programme with two fascinating and informative visits. They learnt how Rookhow near Rusland had been chosen in 1725 as the site for a Quakers' area meeting house due to its equidistance from the Swarthmoor, Colton and Cartmel Heights houses. They toured the historic building and had Quaker history and worship graphically explained to them. Their final outing was a visit to Furness Abbey guided by Dr Christopher Tinmouth who led the party around the ruins and described how the monastic house had been founded in 1127 and had grown into the second largest Cistercian house in England before its dissolution by Henry VIII's agents in 1537. His talk included excellent descriptions of the architecture and monastic life. The Club's next meeting will be on Thursday, September 7th at 7.30pm in the village hall for a talk by Tony Linton on George Hutchins Bellasis' early picture

of Grange-over-Sands and the history of the town. Admission for members will be free and £3 entry for visitors. Further information on CPLHS, membership and activities can be found at Cartmel Peninsula Local History Society | Bringing Local History to the Community ([wordpress.com](http://wordpress.com)) or from Stuart Harling on 015395 36296.

### Cartmel Village Society

Advanced preparations are underway by CVS for the Medieval Cartmel festival on Saturday, September 30th between 10am and 5pm to celebrate the restoration of the village's ancient market fish slabs and pinnacle. There will be tours of the Priory and its bell tower, and the village's other historic buildings. Street markets will be held with roaming minstrels and historic re-enactments, including the Cartmel Black Horses. Work on a CVS sponsored project to restore the 1681 Royal Coat of Arms of King Charles II in Cartmel Priory to celebrate the Coronation of King Charles III will start in early September. Visitors to the Priory will be able to view the ongoing work at the back of the church.

### Grange Fell Golf Club

Robert Moore hosted Captain's Day in mid-July and as we know July was a very wet month. It was no different on the day and 58 players braved the elements to honour their Captain. Despite the weather the scores on the day were excellent and three players scored 42 points. Peter Weston and Tony Bowden were the unlucky ones losing out on countback to Dave Grundy – winner of this year's Captain's Prize. A fantastic day and evening was had by all.

The George Airey greensome competition was won by Steven D Wilson and Steve Porter with a net 62.

The ladies played a close Molly Davy scratch trophy, with Carol Campbell back on winning form. Edna Martland Round 3 was won by Kirstine Curwen (her first major win), and the overall trophy winner was Dayna Davidson. Mr Captain's mixed 9 hole was won by Anne Clough, and Marjorie Blackburn won the ladies July 9 hole. Dunnerholme hosted a friendly match, which was enjoyed by all

### Women's Over 35s Turn up and Play Football Sessions

Westmorland CFA are partnering with Cumberland CFA to run events as part of their "Turn Up and Play" Roadshow.

The FREE recreational football sessions are for women age 35+ who would like to come and play football in a friendly and fun environment.

The upcoming events at Dallam School 3G are as follows:

Sunday 3rd September 12pm-2pm,  
Sunday 1st October 12pm-2pm,  
Sunday 5th November 12pm-2pm,  
Sunday 3rd December 12pm-2pm

For further information and to register email: [Sophie.Hughes@Westmorlandfa.com](mailto:Sophie.Hughes@Westmorlandfa.com)

### Crake Valley Croquet Club

The season is nearing its completion with our 3 leagues teams looking to finish in the top three. A great achievement with our limited playing resources. The Club attracted interest by taking a stand at the Rusland Show with two "free" taster sessions arranged for Saturday 2nd and Sunday 10th September. Club Finals Day is also planned on 2nd September and the season concludes with a Ladies Golf Croquet Open mid September. Players are due from all over the UK and spectators are welcome.

### Cartmel Cricket Club

Since the game against Westgate we have had several games rained off. We lost to Netherfield by 59 runs, with Joe Cowperthwaite taking four wickets and Dave

Unsworth and Joe Atkinson taking three wickets respectively. Against league leaders Silverdale we performed poorly with the bat but Joe Atkinson took three wickets and Bob Davies took an amazing one handed catch off his own bowling. Away to Heysham 2nd XI we were all out for 88 with numbers 9 and 10, Joe Atkinson and John Burton putting on a 50 partnership. In reply, Joe Atkinson took four wickets, Joe Cowperthwaite took three to enable us to a thrilling four run victory. We recently lost to Milnthorpe by 15 runs with the highlight being Joe Atkinson's five for 18, he currently has 42 wickets for the year. We currently lie 9th in the league (out of 12 teams). However the league have informed us that rather than two teams being relegated, it could now be four teams which puts us perilously close to being relegated. We have four games left against similar lower placed teams so the next few games are crucial for us.

### Allstars and Dynamos - Junior Cricket

On 30th July Cumbria County Cricket Club entertained Lancashire Cricket Club at Sedburgh school in the National Counties fixture. Cumbria Cricket board invited Cartmel's Allstars and Dynamos players to be flag bearers for the start of the game and also to play cricket on the outfield during the lunch interval. Lancashire

## SPORT



cricketers Keaton Jennings, Dane Villas and George Balderson joined the juniors. All the children really enjoyed this special day out and also it was a great thrill to play with the Lancashire professionals. This summer Cartmel Cricket Club had a successful year with the Allstars (5-8 year olds) and Dynamos (8-11 year olds) with over 35 children attending. We will be doing similar junior cricket next year and hope to have an under 11s team next year.

While Growing Well are busy cultivating good mental health from their base here on the farm, we are in the fortunate position of receiving organic bounty from their fields to the Low Sizergh Barn farm shop and café. This month, that's plenty of kohlrabi and cabbage. So our recipe suggestion is a deliciously simple side



dish of kohlrabi slaw, which is quick to make but unusual enough to impress guests.

## Kohlrabi slaw

### INGREDIENTS

- 1 Growing Well kohlrabi, peeled and shredded
- 1/4 head red cabbage, shredded
- 2 medium carrots, peeled and grated
- 1/2 a small red onion
- 4 tablespoons chopped fresh coriander or parsley
- 2 tsp sunflower seeds
- 4 tsp mayonnaise
- 1 tablespoon cider vinegar
- Pinch salt
- Pinch sugar



### METHOD

Place the shredded spring Combine the kohlrabi, cabbage, carrots, onion, coriander or parsley, and sunflower seeds in a large bowl. In a smaller bowl, whisk together the mayonnaise, cider vinegar, sugar, and salt. Pour the dressing over the slaw, and mix until fully coated.

Chill before serving.

## EIGHTEEN EIGHTEEN AUCTIONEERS

Specialists in valuations for insurance purposes.

As your local auction house team, we have experienced valuers who can conduct home visits or arrange an appointment in our purpose-built saleroom just off Junction 36.

Probate valuations and house clearance are additional services offered by our friendly professionals.

[1818auctioneers.co.uk](http://1818auctioneers.co.uk)

T. 015395 66201  
E. [info@1818auctioneers.co.uk](mailto:info@1818auctioneers.co.uk)  
Junction 36 Auction Centre,  
Crooklands, Cumbria, LA7 7FP





## Grange & District Natural History Society

### Butterflies

In early July members of GDNHS were invited to join Butterfly Conservation for a survey on Hampsfell for Britain's rarest butterfly, the High Brown Fritillary, for which Cumbria is still a stronghold, although numbers are declining year-on-year. Led by our local guide, David Jackson, we looked for butterflies on known nectar plants, out of the wind, and preferably south-facing. The High Browns are at their very northern limit in Cumbria, and look for warm places to lay their eggs. The females lay eggs only in the dead bracken litter, which as it decomposes can be 10-15°C warmer than the air temperature above. Despite flying very quickly, a butterfly was netted, examined and photographed before being released. This species may be too specialised in its requirements to survive much longer in a changing climate. It is another indicator of environmental change for us to note and act upon.

In mid-July we were at Humphrey Head Nature

Reserve with Pete Jones, Cumbria Wildlife Trust Reserves Officer. Meeting at the end of Holy Well Lane, members walked along the western base of the headland. We looked at the salt marsh and pondered how the channels change, so it is no longer possible to walk around the headland on the sand. Out on the salt marsh we looked up at the cave on the cliffs above. On the headland, the recent rain had revitalised some of the specialist limestone flowers. Pete explained how the limestone grassland was managed by careful grazing to encourage wild flowers and later the grassland fungi. He discussed the difficulties of trying to extend the area of the rare Green-Winged Orchids. Mindful of the forecast 'rain later', and spying a distant storm approaching, we retreated. This is another magical place for wildlife close to Grange. Keep an eye on our web site, [www.grangenats.uk](http://www.grangenats.uk), for further visits and activities into autumn.

Sylvia Woodhead

## The Community Orchard



Grange Community Orchard in flower - photo David Benham

**Due to the generosity of Colonel Porritt's will we have in Grange many green spaces.**

The community orchard was planted in 1998, by the Grange Civic Society. It consists of over 40 fruit trees; all are labelled giving the origin, the date when it was introduced, the type (cooker, dessert or dual) and when it is ready for picking. The Civic Society pays for it to be pruned every year and

the South Lakeland Orchard Group use it for training purposes. The fruit is for use by the local people, so please when picking don't damage the trees. It is looked after by four volunteers.

There is an abundance of apples and blackberries this year so please pick the fruit - both freeze very well. There is so much food we can grow even in small gardens, on window sills or in pots. With the increase of food prices and the fact that 9.8 million tons of our food is imported from the Mediterranean region, we should be using the few town allotments wisely, to feed ourselves and not buy the ultra processed foods, which can cause many health problems because they are high in salt, fat and sugar.



## Who gets my house if I die without a will?

It all depends on who you leave behind. Intestacy (where an individual dies without a valid will) can lead to unintended consequences, such as distant relatives inheriting assets or estranged family members receiving a share.

If a person dies leaving a surviving spouse or civil partner but no children, then the position is straightforward. The survivor will inherit the entire estate. However, things are drastically different if there are surviving children besides the spouse or civil partner. In this scenario, the surviving spouse or civil partner receives a statutory legacy; a fixed sum set out by law. They will receive all the deceased's personal belongings and one half of the residuary estate, which is 'everything else'. The remaining half of the residuary estate will be shared between the children.

The statutory legacy was increased in July 2023 from £270,000 to £322,000. Now consider that as of June 2023 the average UK house price stood at just over £287,000, this means that for those in towns and cities where property commands higher prices, they might end up unintentionally owning their home with children or stepchildren.

To avoid this uncertainty, it is wise to create a will that reflects your true intentions. Taking the time to draft a will can provide peace of mind and ensure your estate is passed on as you wish.



Pam



Pollyanna



Hannah



Richard

Contact us today to arrange an appointment.

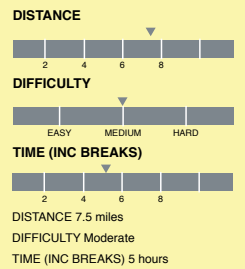
**015395 38288**

Kents Bank Road, Grange-over-Sands LA11 7EY

[www.progressionsolicitors.com](http://www.progressionsolicitors.com)

ULVERSTON | WINDERMERE | GRANGE | BARROW | LANCASTER

# Walk of the Month



A circular walk via field paths and lanes from Kendal, via Slersmergh, Garnet Folds, Meal Bank, Benson Knott and River Mint. This is planned for 18th October – Grange Now readers are very welcome to join.

## DIRECTIONS

Start: Layby off A6 North of Kendal, Sat Nav: LA9 6NU  
Map ref: SD 527951 (OS Explorer OL7)

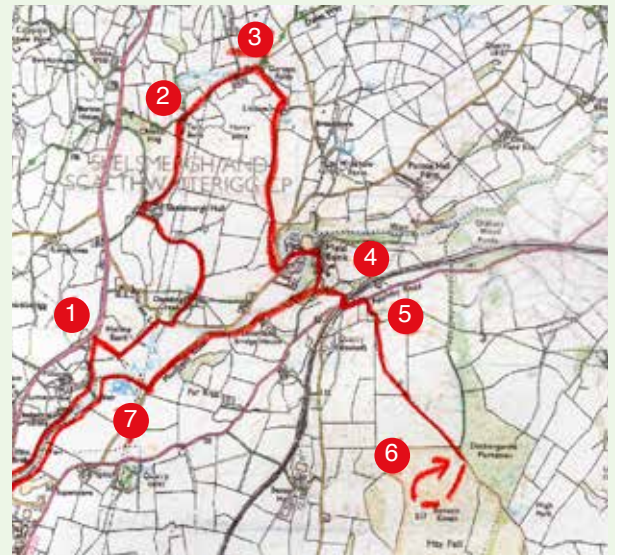
1/ From Kendal end of layby, go through gate and down field below overhead cables then turn left onto path, follow until it exits onto Helme Lane. Turn right down lane then left into

Doddington Green Drive. Go through gate to left of house then over stile by spring onto field path - this bends left to join farm track. Walk down to track past Skelsmergh Hall and turn right at junction.

2/ Follow lane and below garages at Spring Howe, turn right up steps follow path left through gate. Follow field path parallel to hedge at end of field cross wall stile. Walk past Tarn Bank and out onto lane.

3/ Turn right and walk down lane past junction to Edge Bank then at White House at Garnet Folds turn right towards greenhouse down steps, then right and over stile, Turn left a cross culvert and through gate.

MAP SUPPLIED FOR ILLUSTRATION PURPOSES ONLY



Follow path to left of remains of Littlemire. Cross wall stile past ruins then follow path down beside beck to bottom of valley and out via roadside kissing gate.

4/ Turn left then right into Meal Bank Mill Trading Estate, past Coffee shop, follow road through estate with River Mint on left walking up lane past old village school and out onto road and turn left. Walk up lane onto Appleby Road turn left (take care as busy road). Cross over railway then take signed footpath to Hay Fell.

5/ Follow footpath up past old farm buildings follow path as it bends left to wall stile at field corner. Cross into next field and follow path up to gate in wall in right corner. Then follow path to left and up onto Benson Knott then across to Trig point from both panoramic views can be seen

of surrounding lake district.

6/ From Trig point follow path and reverse your steps back down to Appleby Road. Turn Left over railway bridge and then right down Meal Bank Road. Follow road till signed footpath on right onto riverside footpath.

7/ Follow riverside path across several wall stiles past large water pies carrying water from Thirlmere Reservoir then past Morrisons and out onto Mint Bridge. Turn right and then follow path along other side of river past Rugby Club. At Millcrest go through gate then right at second gate and past garages on left through gate into field path. Follow path with Kendal Camping and Caravanning Club site to your left then through wooded river side path exit at kissing gate with wall to your left to return to start point on A6.



**MJK**  
PLUMBING & HEATING LTD



## MJK Plumbing & Heating Ltd

We have many years experience in the plumbing and heating industry. We pride ourselves on excellent customer service and guarantee all our work to the highest standard.

**We specialise in: Gas boiler and full heating systems, boiler repairs/ break down, boiler servicing, central heating flushing, landlords Gas Safety certificates & all plumbing, bathrooms, kitchens and more.**  
Ex British Gas engineer



**Call 07918 191540**

Email [mjkplumbing1975@gmail.com](mailto:mjkplumbing1975@gmail.com)

**Visitors are always welcome to join our weekly walks, details of the starting times and place can be found in the Ramblers website.**

**Please find the walks for September below:**

**Thurs 7 Sep:** A stroll around Sedbergh - 7.5miles, 850 feet ascent. Easy

**Thurs 14 Sep:** Caton, Cloughton Moor and the River Lune - 7.3 miles, 927

feet ascent. Moderate.

**Thursday 28 Sep:** Condor Green, Lancaster Canal and the Lune Estuary - 8 miles, 200 feet ascent. Easy

**Details of start times and locations can be found on the Ramblers website at <https://www.ramblers.org.uk/go-walking/group-finder/areas/lake-district/groups/grange-over-sands.aspx>**



# WHY DO I NEED A WILL?



**A Will allows you to decide what happens to your estate when you die. If you do not have a Will, your assets will be distributed according to the laws of intestacy, and this may not align with your wishes. By making a Will, you decide who shall have control over who deals with and receives your personal belongings and assets.**

A Will allows you to appoint a person you trust to be an executor. They are responsible for managing your assets and ensuring your wishes are carried out. The executor handles all the administrative tasks involved in dealing with your estate involving obtaining the Grant of Probate where required, collecting your assets, paying debts, finalising tax affairs and distributing your assets according to the Will.

As a Will is stating your personal wishes, you get to make a positive demonstration of your own generosity rather than leaving it to chance.

If you have children under the age of 18, a Will enables you to appoint a guardian. If you were to die without a Will and there is a dispute between family members as to who the children should reside with, the court shall be left to decide who will be responsible for the upbringing of your children. This may not align with your preferences.

Creating a clear and legally valid Will can help minimise potential disputes and conflicts with family members after your death. In a Will, your wishes are explicitly outlined and therefore reduces the likelihood of disagreements regarding asset distribution.

When a Will is well-drafted, the probate process can be made a lot simpler for your loved ones. Clear and precise instructions can expedite the distribution of assets and can potentially reduce time and stress that can come with probate.

The other significant reason for many people is to make the best possible use of tax allowances available to you. Estate planning is a significant part of what we do.

Within your Will, you can instruct how you want your funeral to be carried out. Even though the instructions aren't legally binding, it will give guidance to your executors. For example, you can say where you want your service to be or if you want to be cremated or buried. Doing this will lessen the burden on your loved ones and your wishes can be carried out.

For all these reasons it is important to make a Will to ensure your wishes are adhered to. It is also important to consult with a solicitor before creating a Will to ensure it complies with the law and covers all your wishes.

**Here at Gedye & Sons we have solicitors with a wealth of knowledge in Will drafting so call us today on 015395 32313 and a member of our Private Client team will contact you to discuss your requirements.**

LEGAL PEACE OF MIND SINCE 1903

015395 32313

info@gedye.co.uk

gedye  
& SONS

# What's On at The Vic – Sep

## REGULAR

**James Reeder Dance classes** – all styles, Weds from 7pm. Break until 20/09

**Various U3A groups** – contact U3A

**Wild Soul Yoga.** Book on [hello@mywildsoul.co.uk](mailto:hello@mywildsoul.co.uk)

**Parliamo Italiano** –Tues eve. 7pm intermediate. Thurs eve. 7pm New beginners class from Sept.

**Creative Photography** – Thurs 7pm. Start again in Sept.

**CADAS Peer Support Group** – Thurs mornings. Contact [richardc@cadac.co.uk](mailto:richardc@cadac.co.uk)

## INDIVIDUAL

**Sat 02/09, 7.30pm:** Don Giovanni by Cumbria Opera Group

**\*Mon 04/09, 7pm:** Bingo

**Fri 08/09, 7.30pm:** G&DCC concert - Classico Latino

**\*Sun 10/09, 7pm:** Cinema at The Vic film: The Unlikely Pilgrimage of Harold Fry (2023) (12A)

**Weds 13/09, 12.30pm – 4pm:** Home Instead Companionship Café. All welcome

**Sat 16/09, 2pm – 4pm:** Wild Soul Yoga

**Tues 19/09, 10.15am:** U3A Monthly Meeting

**Tues 19/09, 12noon – 1pm:** Police Desk with PCSO Jayne Park

**Weds 20/09, 7pm:** Reeder's Dance Studio dance classes restart

**Fri 22/09, 7.30pm:** Friday Night Dancers. Modern Ballroom social dancing

**Sat 23/09, 9am – 5pm:** Westmorland Orchestra Play Day

**Fri 29/09, 7.30pm:** K Shoes Male Voice Choir concert

**\*Sat 30/09, 7pm:** The Good Old Days variety concert with Charity&Co

\*Denotes VHSG event to support the Victoria Hall.



# What's On in September

**30th, 31st Aug, 2nd Sep, 19:30 Victoria Hall, Cumbria Opera Festival 2023.** In a new English translation, this production of Mozart and Da Ponte's masterpiece features an all-star cast from Glyndebourne, Garsington and the Royal Opera House.

**Tuesdays 5, 12, 19, 26** Cartmel Wellbeing Walks from Cartmel Racecourse grandstand entrance at 11am. Contact Ewen Cameron on 07929 833528 for information.

**Tuesday 5th** Mothers & Others-7.30pm. "Puzzles & Puddings"-in the Father Magner room behind St Charles' Catholic church on Kents Bank Road.

**Tuesdays 5, 12, 19, 26** Baby group for parents, carers and their little ones at Grange Methodist Church Hall from 9:30 am. Hazel Edmondson 015395 36213

**Wednesdays 6, 13, 20, 27** Community Coffee morning in Grange Methodist Church Hall from 10:30 to 12 noon.

**Thursdays 7, 14, 21, 28** Grange Wellbeing Walks from the pay-and-display car park behind the Commodore Pub at 11am. Ewen Cameron on 07929 833528 for information.

**Thursday 7th** Cartmel Peninsula Local History Society will meet at 7.30pm in the village hall for Tony Lonton's talk on the earliest picture of Grange.

**Friday 8th** Grange-over-Sands and District Concert Club concert at 7.30pm Vic Hall, Classics Latino Quintet's fusion of Latin and Classical music.

**Monday 11th** Grange Probus Club will meet 10.30 for 11am Netherwood Hotel for Roger Bingham's talk about "the History of Grange-over-Sands".

**Wednesday 13 and Saturday 16** Cartmel Priory Gatehouse will be opening for Heritage Open Days on 10am-4pm, also Saturday 30 Sept 10-4 as part of the Cartmel Medieval Fair.

**Sun 17th** Art Heart Space Exploring Creativity with spirituality. Creative, drawing, painting 2.30-4.30 pm. Allithwaite Community Center. Jenny on 015395 35979

**Tuesday 19th** Mothers &

Others-7.30.p.m. "Wool Spinning"-in the Father Magner room behind St Charles' Catholic church on Kents Bank Road.

**Thursday 21st** Coach trip to The Lakes and Keswick - Flookburgh & district over 60's First pick up Flookburgh Square 9.30am. Leaving at 4pm Contact: Wendy Bland 015395 58392

**Saturday 23rd** Newton In Cartmel Village Hall - duo Lauren and Martin - aka Socially Awkward. 7pm till 10pm.

**Sunday, 24th** Foodbank Donation Father Magner Room, St Charles RC Church 1 - 3 pm

**Tuesday 26th** Circle Dancing. Start of term. No partner or dance experience needed. Gentle to moderate pace. Allithwaite Community Centre 2.15-4.15. All welcome. Helen Brooks 01539 324774

**Friday 29th** Quiz and hot supper at Grange Methodist Church at 6:00pm

**Saturday 30th Sep & Sunday 1st Oct** Art& Trail around Witherslack and the Winster Valley. Art& Trail brings together art studios and exhibitions of many local artists within a short drive through the Winster Valley from Witherslack to Cartmel Fell. [www.harehillbarn.co.uk](http://www.harehillbarn.co.uk)

**Saturday 30th** Medieval Cartmel Festival 10am to 5pm

**Saturday 30th** Souper Saturday! Come and join us for lunch, home-made soup and other goodies! 12 noon till 2pm. All welcome. Newton In Cartmel Village Hall

**AGE UK** Exercise Classes Grange – Every Tuesday 2-3pm at the United Reformed Church, Kents Bank Road, Grange – no need to book.

## Lunch Clubs

**Grange** – Third Wednesday in the month at the Commodore Inn, Grange

**Cark** – Fourth Friday in the month at the Pheasant,

## Allithwaite

Allithwaite – Second Tuesday in the month at the Pheasant, Allithwaite. To book on the Lunch Clubs please contact Age UK South Lakeland on 01539 728118





Letters to the Editor are published on the understanding that they may have to be shortened to fit available space. Publication of a letter in no way reflects the views of Grange Now. All letters must be accompanied by a name and address even if the correspondent requests anonymity. In this case 'name and address supplied' will be added.

#### Dear Editor

Grange Town Council have been updated on the Windermere Road flood alleviation work, to be completed fairly soon. Then, flood water will be pumped from Windermere Road Car Park into the Ornamental/Duck Pond. The actual cause of the flooding has never been acknowledged, and very likely these works will not solve the problem.

Windermere Road would never flood if water could flow freely from there into the Bay. Now, the flow is restricted at the outflow from the Duck Pond. When it rains hard enough for long enough, the increasing flow into the Duck Pond causes its level to rise to push that greater inflow out past the outflow restriction. That can make the water level in the Duck Pond rise to the level of Windermere Road. For water to continue to flow from Windermere Road to the Duck Pond, the flood water level on Windermere Road then rises above the level in the Duck Pond, which means Windermere Road floods.

Pumping water from Windermere Road into the Duck Pond is like pumping water from one end to the other end of a bath tub that is overflowing because the plug hole is partly blocked.

I'd be glad to hear from anyone who thinks this is wrong.

George Parr

#### Dear Editor,

Your pet's favourite shop it's on its way. Hi my name is Paulina and happily would like to let you know that Grange will have a pet shop!. The shop will stock dry food, wet food and raw food for dogs and cats, treats and accessories and much more for small pet's as well. Shop will be open 5 days a week and offering local deliveries. No live animals will be sold in the shop. Before the opening time in November I would like to find out what pet's Grange and local area do have and what would be good and helpful for future clients to find in the shop. Makes of food, brands etc. will be helpful. Please share your thoughts and send them to email [grangepet@outlook.com](mailto:grangepet@outlook.com) Thank you

Paulina Melling

#### Funeral letter of thanks

The family of the late June Turner would like to express gratitude to everyone involved in her funeral arrangements. Thank you to Church Minister Annette for dutiful care and service guidance. Thank you to the organist as Morning Mood was played so movingly at the point of reflection. Thank you to Funeral Director Alan Postlethwaite and wife Helen as they supplied a faultless service, delivered with care and consideration at every stage. Thank you to Grange Flower Service for the willingness to supply out of season orchids to place in mum's breathtakingly beautiful funeral arrangement. Thank you to Grange Hotel who supplied a wonderful wake including all dietary requests.

Melanie, David, Alison and Peter.

#### Dear Editor.

May I through Grange Now, take the opportunity to express my gratitude to the very kind young man who saved me from what would have been a very nasty fall when I tripped on the path alongside the railway line between Kents Bank and Cart Lane on August 19th.

I did thank him but was rather shaken and feel it wasn't enough so if local may see this letter.

The two ladies with him were also kindly concerned, so once again Thank you.

Name and address supplied.

#### Dear Editor,

I am a local private carer who assists elderly people in shopping locally. I am in local shops daily for people who cannot get out. We are told we aren't allowed to park in the library and spaces on the road are limited. I have just been given a parking ticket for parking on a yellow line at the co-op. I was going for pads for an elderly lady. I will now have to advise my clients I will have to park further from the shops so this will take more time and likely more cost for the client or they will have to pay for me to park in Tesco car park. Grange is driving people to the supermarkets and likely I will go back to my delivery and buy clients things cheaper and less cost to me. Shop locally is just not working for local people in Grange

From a very angry private carer

#### Dear Editor,

I am writing to express my concern and frustration at the ongoing problems with parking around Main Street in Grange. I am a mobility scooter user with limited mobility in general and I was infuriated to see the other day that a selfish motorist in a Mini had parked very inconsiderately over the ramp where I needed to cross the road to get to the other side, but couldn't due to the vehicle being parked right across the ramp. Many motorists are completely oblivious to the fact that the section of Main Street down by Higginsons is a one way street, and drivers are sometimes deliberately getting away with the fact that they think that it is acceptable to drive the wrong way up Main Street when there are clearly no entry signs placed appropriately at the bottom of the road opposite Grange Fell Road. I have witnessed drivers driving up straight through the no entry signs, and one solution to this is to install a barrier which would open if cars came the right way down Main Street, but not if they chose to ignore the one way system between Pig Lane and Main Street coming in the other direction. Whilst there is the presence of a traffic warden from Westmorland and Furness Council, I feel that penalties for drivers are not going far enough and enforcements need to be a lot, lot tougher on selfish and inconsiderate motorists, whether they live locally or not.

Mrs Alison Binks Grange

#### Dear Editor,

As you enter Grange there is a sign announcing Winner of Britain in Bloom 2011. Surely I can't be the only resident who feels this sign is long past its sell by date. We are now in 2023 and rather than showcasing our success, all this sign does is highlight our failure to win over the last 12 years. We have so much to publicise about this town, in particular the restoration of the Lido, the lovely Promenade Gardens and the magnificent views across Morecambe Bay, to name but a few. If we want to attract visitors, then we need to be looking to the future to promote Grange, rather than harking back to an accolade achieved 12 years ago, with nothing to show since.

Christine Garrity

#### Dear Editor,

Good news that The Lantern Community Hub celebrated its last week in service before closing its doors on Saturday 19th August. MP Tim Farron has just visited on his rural Summer tour and said what a real blessing The Lantern has been in the community. Cockles Convenience Store are very excited about establishing themselves in Allithwaite and continuing to serve the community in a new way.

Many thanks and very best wishes,

Michael Fieldhouse

## SITUATIONS VACANT

## ASSISTANT REQUIRED

for Gentleman living in Haverthwaite assistance to undertake various household tasks, routine gardening and the occasional need for driving to appointments or social engagements.

Please contact: office@dstrust.org.uk or Tel: 015395 30022

## COOK

Required to cook meals for local house, to prepare a number of simple and interesting dishes, to be frozen or eaten at once.  
Well equipped, nice sized kitchen.  
Hours by arrangement.

Email: office@dstrust.org.uk or Tel: 015395 30022

## WANTED – GREENKEEPER

**ALLITHWAITE BOWLING CLUB** are actively seeking a person to maintain their bowling green through the winter season of 2023/24 and onward. The role would suit a retired or semi-retired person living locally.

## Main duties include:

- Regular cutting of the green
- Scheduled scarifying and fertilizing
- Cleaning all green machinery and equipment

## Experience required:

- Green or grass care
- Use of Green machinery

For more details please contact: Alan Balderstone on 07595 417069 or alan.balderstone@talk21.com

## Bargain Booze

## STAFF VACANCY

WE HAVE A PERMANENT VACANCY FOR  
20 HRS PER WEEK

WE ARE LOOKING FOR SOMEONE WITH EXCELLENT CUSTOMER SERVICE AND COMMUNICATION SKILLS WHO CAN WORK ON THEIR OWN INITIATIVE AND ALSO AS PART OF A TEAM

PREVIOUS EXPERIENCE IS PREFERRED BUT NOT ESSENTIAL AND FULL TRAINING WILL BE PROVIDED

APPLICANTS MUST BE OVER AGE 18

HOURS WILL VARY AND WILL COVER EVENINGS AND WEEKENDS, WITH SOME OCCASIONAL WEEKDAY SHIFTS. APPLICANTS MUST BE FLEXIBLE TO SOME EXTENT WITH WHAT SHIFTS THEY CAN DO.

PLEASE APPLY BY SENDING YOUR CV IN TO:

Josh Hancox

grange@pandlenterprise.co.uk

or hand in instore

## ACCOUNTS/SELF ASSESSMENT

**FOR HANDS ON ASSISTANCE** with accounts, Self Assessment and VAT. Locally. Call 015395 58916.

## ANTHONY CLYNES

**ACCOUNTANTS** Accounts, Self Assessment, PAYE/wages, Bookkeeping/VAT, Personal friendly service - Contact  
Tony 07778 485 475 (Grange)

## APPLIANCE REPAIRS

**Domestic Appliance Centre.** For all your Domestic Appliance Needs. One call takes care of it. Call 01539 741241

## BABYSITTING

**THE DOBSONS** 01539522612

## BOOKS

**Daisyroots Book Shop**, for pre-loved and new books, cards, maps and prints. Visit us in our new expanded shop on Main Street, Grange. Book collections bought. Open Mon-Sat 10am – 4pm. 015395 38817

**BOOKS BOUGHT** Collectable items or whole collections. PBFA Member. Phone 015395 35125 (Allithwaite)

## BUILDERS

**MARK SUMNER** General Builder with over 30 years experience Bricklaying, repointing, internal and external decoration. Floor and wall tiling. External carpentry, including decking, wooden handrails and fencing. Tel: 07946 391143

**Builder / Handyman** – former main contractor now doing smaller jobs. Bathrooms, kitchens, joinery, decoration, insulation, plumbing, etc. 20+ years experience. Local references available. David Pattison 07939 092454 / david@pattisson.uk

**General builder**, all jobs welcomed, inside/outside, Grange and surrounding areas 07471 974889 vladutostafe@yahoo.com

## CARE SERVICES

**BAY HOME CARE LTD.** Established 2014, fully registered professional provider of home care and community support services. Based in Grange Over Sands and managed by Grange residents we offer a full range of care services to adults within their own homes. This includes support with personal care, medication, shopping, cleaning, community transport and much more. For more information please call 015395 34987.

## CARPETS

**HDC FLOORING** Albert Road, Grange-Over-Sands Tel: 07905 687672 www.hdcflooring.co.uk Carpets, Vinyls, Amtico, Karndean Laminate, Engineered Wood

## CARPET CLEANERS

**THE DOBSONS**  
Carpet and upholstery  
01539522612

**Carpet and Upholstery Cleaning**, Grange over Sands. 015395 62390

## CHIMNEY SWEEP

## ROB CHAMBERS

All types of chimneys and flues  
Member of the National Association of Chimney Sweeps HETAS  
Approved. Fully Insured  
Tel: 01229 588025  
Mobile: 07881 921529

**ANDREW BACKHOUSE CHIMNEY SWEEP LTD** 25 years of quality workmanship in your area Trading Standards Approved 015394 45117 or 07763 145 594

## CHIROPODIST/PODIATRIST

**DAVE HEMMINGS** M.Inst.Ch.Pod. HCPC Registered. Qualified 1982. Home visits Grange & Surrounding areas. 07736 448 702 or 015395 35487.

**SUE LAWTON** (D.Pod.M, RCPod) HCPC Registered. Qualified & Registered for over 30 years. Home visits to Grange and surrounding villages. 015395 83625

**Dr Anders - Podiatrist.** Expert treatment and advice for all foot problems. Dr Judith Anders PhD is a highly trained Degree qualified Podiatrist with over 20yrs experience. Tel: 07584 301653 www.dranderspodiatry.co.uk

**NICOLE WATERS**, BSc (Hons) Podiatry, MRCPod, HCPC Registered. Home visits to Grange & surrounding areas. Call 07760832027 or email info@nwaterspodiatry.com for an appointment.

## CLEANING SERVICES



**DOMESTIC & COMMERCIAL**  
Regular, builders, spring cleans,  
Holiday change overs, End of Tenancy

Helen 015395 35277 or Lakelandmaids@gmail.com

**LITTLE MISS MOP & BUCKET**  
Weekly and fortnightly cleans, Deep cleans, End of tenancy cleans. Call Kelly 07810 415406

## CLOCK &amp; ANTIQUES RESTORER

**HANDYMAN SERVICES** Clock, Barometer, Furniture Repair and restoration undertaken also minor domestic household repairs. No job too small. Tel: (015395) 96316 ask for Tim e-mail: tim1492@outlook.com.

**THE CLOCK WORKS** Antique Clock Repair, Restoration & Sales Quality Work Fully Guaranteed BW&CMG member Est 1991 01229 822680

## COMPUTER SERVICE

**COMPUTER HELP AT HOME.** For computer problems or tutorials in plain English. Call Graham Brook a certified computer engineer on 07787727443 or 015395 60868

## COUNSELLING

**Rachael Mary Counselling**, face-to-face, online and phone sessions are available. BACP member Tel: 07846 611632 www.rachaelmarycounselling.co.uk

**Alix Jagger**, appointments in Grange and online. BACP member. 07818 896 170. www.alixjaggercounselling.co.uk

**Counselling/ EMDR Louise Tych** BACP Accredited. 15 years experience. In person, online, phone. www.southlakescounselling.co.uk 07775610480

**Hillfoot Coaching.** Are you struggling with loss, divorce or just life in general? As a qualified, professional coach, I can help you. Contact me today to arrange your free introductory session. hillfootcoaching@gmail.com 07802 714478

## CURTAINS/SOFT FURNISHINGS

**Curtains, Roman Blinds** and soft furnishings made for you, also clothing alterations. Call Joanne Airey at Sew'n'Sew on 015395 34215

**Arabella Jane Interiors** Made to measure curtains, Roman blinds and soft furnishings. Contact Bella on 07920748770 www.arabellajaneinteriors.co.uk

## DOG GROOMING/ WALKING

**Jude's Groom Room** including cats based in Kents Bank. C&G. Natural shampoos. Call Jude 07914644852

**CARTMEL VALLEY DOG GROOMING** Qualified, experienced, insured, caring. References. Natural products. Free puppy intro. CLAIRE 07748 077077 www.cartmelvalleydoggrooming.co.uk



**DOG GROOMING/ WALKING**

*Small Paws Dog Grooming*  
**BY ANDREA NELSON**  
 30 years experience  
 Small to medium dogs  
**07470 409414**  
 collection & delivery in the local area

**DOG WALKING** Jude 07914 644852  
 Fully insured, experienced, kind and caring

**Bark of Beyond** Dog walking and training services. Specialising in active, outdoor dogs & working breeds. Fully insured. For details visit [www.barkofbeyond.com](http://www.barkofbeyond.com) or call Mick on 07794754199

**Stitch in Time.** Sewing repairs & alterations. Maureen Maddock 58436.

**ELECTRICIAN**

**AM&Co Group Ltd** - domestic and commercial. Over 15 years experience. Qualified, insured and NAPIT certified. [www.amcogroup Ltd.co.uk](http://www.amcogroup Ltd.co.uk) 07400562162

**D.M. Cowgill** electrical contractor, Grange area - small jobs undertaken, lights, powerpoints etc. tel 07970 601379

**MBSG Electrical Services** All domestic and commercial. Fully qualified, registered/approved. Stan 07831007646

**T W Electrical (Cumbria) Ltd,** Electrical Contractors, All aspects of electrical work undertaken, Domestic, commercial and industrial, NICEIC Approved Contractor, Call 015395 59089 or 07702792916.

**Ian Purcell Electrical Contractor** City & Guilds Qualified/NAPIT Registered/Fully Insured 015395 58814 07885099269

**ENGRAVING**

**ENGRAVING/TROPHIES** Kendal Trophies 015395 58863  
[www.kendaltrophies.co.uk](http://www.kendaltrophies.co.uk)

**FENCING**

**GRANGE SERVICES** ~ fencing & gates, Steve 07968 100114

**FITNESS & WELLBEING**

Physiotherapy support and Personal Training in the comfort of your own home. Specialising in rehabilitation and re-introduction to exercise (including for conditions such as COPD, Stroke, heart disease). Assistance with improving balance, flexibility and strength. Elaine 07855 135714

**FUEL SUPPLIES**

**SMOKELESS FUELS** Long established, approved coal merchants delivering quality service 7 days. Best SMOKELESS prices in area. 07949 594381

**AR Dickson Countryside Services Ltd** Seasoned firewood, Kiln dried firewood, hardwood or softwood, Kindling. Bulk bags, net bags, trailer loads or barrow bags. Please contact 07824736255  
[angus1990@btinternet.com](mailto:angus1990@btinternet.com)

**FURNITURE RESTORERS**

**JM RESTORERS.** Antique, Modern furniture, Porcelain, Paintings. Est 41 Years 015395 68915

**GARDENING****DJ Dixon of Grange**

Gardens maintained to the highest standards, mowing, hedges, trees, pressure washing, overgrown gardens cleared - no job too big. Fully insured. For a high quality service with an outstanding reputation. Mobile: 0771 320 3609.

**GRANGE GARDENERS for GARDEN MAINTENANCE & DESIGN**

Extensive plant knowledge  
 We maintain gardens all year round  
**Call Michael and Liz**  
**Thornborough 015395 32118**  
**mobile: 07796 674 861**  
[www.grangegardeners.com](http://www.grangegardeners.com)

**PAUL GIBBONS GRASS CUTTING,** Pruning, Weeding, Planting, Strimming, Leaf clearing and Patio cleaning. 07932 741546

**KGC Lawnmower Services** Grange area and surrounds. Call Kevin Clarke 07956 266264 or email [kevin.clarke9@gmail.com](mailto:kevin.clarke9@gmail.com)

**GARDEN MAINTENANCE,** grass/hedge cutting, weeding, pruning, treework, dry stone walling. James Hawksley Ltd Tel 07980 354 651

**PROFESSIONAL, EFFECTIVE, EXPERIENCED** and reliable Gardening Services for larger gardens/grounds. Small, large and difficult grass areas cut. Trees, hedges and shrubs beautifully pruned. Renovation projects undertaken. Call Hamish Foulerton. Tel 07747 788 370

**M.T. HOWARTH**

Garden maintenance carried out to a high standard incl mowing, hedges, tree work, fencing and pressure washing.

Overgrown gardens cleared and rubbish can be removed. All jobs considered large or small.

**HOME: 015395 32188**

**MOBILE: 0789 4737 069**

**Hedges, lawns, leaf blowing,** general garden clearance including strimming and shredding. Small to large jobs catered for. Established, local, friendly, fully insured operator. Call Simon on 07950 912212 or 015395 34640.

**GRAHAM'S GARDEN SERVICES** Friendly and reliable service for all your garden requirements. Our services include Grass Cutting, Garden Maintenance, Patios Jet Washed, Fencing and hedge cutting. Telephone 07815 313 828 or 015395 58664

**Please support  
 our local  
 businesses**

**GARDENING**

**COPELAND LANDSCAPES,** stonewalling, patios, tree work, hedge cutting, fencing, etc. Established 1980. 01524 730 022 or 07815 955 961

**Grass cutting, strimming,** hedge cutting, pruning, lawn care including moss removal. Green waste disposal. Insured, friendly, experienced, contact George 015395 35716 or 07796 867762

**GARDEN BUILDINGS**

Bespoke garden buildings, home office, bar, summerhouse etc. Built to your requirements, including insulation, plumbing, electrics - use all year. Free quotes, John 07885 532365

**HAIRDRESSERS**

**MICHELLE** Mobile 34904

**CHARLOTTE** Mobile Hairdresser 07966 543223

**Studio 39 Hair Salon** Grange-over-sands. Ladies, Gents and children. For appointments call Laura on 07990 772745 Also on facebook

**Galina Mobile Hairdresser** and Barber. 07412591591

**HANDYMAN/WOMAN**

**I'm your local,** friendly handyman. Specialising in painting and decorating. Also DIY and general repairs around the home. All jobs considered. Call Simon on 07950 912 212 or 015395 34640.

**Handyman available in Grange and surrounding area,** specialising in Upvc door and window problems, including replacement of failed double glazing. All jobs considered, no job too small. For DIY around your home call Mike 07790012820

**GRANGE SERVICES FOR SENIORS** ~ Steve 07968 100114. Call to discuss needs.

**Handyman,** Cartmel & surrounding areas. Call John 07552 045017

**Handyman Services** since 2016. Painting, fencing, guttering plus many more DIY jobs. Excellent reputation. Call Trevor 07810717450

**HEARING SERVICES**

**St Johns Hearing Centre, Main Street, Grange.** Comprehensive Hearing Service. Free home consultations. Full aftercare service. Hearing tests, Repair service, Batteries and Accessories. Gentle Wax Removal Service. 40 Years experience. Tel 015395 36391

**HOLIDAYS FOR DOGS****KENNEL MAIDS**

The Original Holidays for Dogs Since 2000 Officially Rated 5 Stars by SLDC Licensing Authority. Professional Home Boarding Licence no: AHB 003  
 Professional Dog Day Care Licence no: DDC 039897  
 Fully insured - Vet Approved - 20 years of references  
[WWW.P4WS.CO.UK](http://WWW.P4WS.CO.UK)  
[wendysenior360@btinternet.com](mailto:wendysenior360@btinternet.com)

**HOME HELP**

Cleaning, ironing, companionship, shopping. Suzanne 07979 792467

**HOUSE CLEARANCES**

**WA House Clearance & Removals**  
 Garages, sheds etc  
**07528 049 516 / 015395 59469**

**House Clearances, Houses, Garages, Sheds cleared and all contents removed. For prompt reliable and confidential service contact Graham Walkden.**

**Tel: 015395 32793**

**JOINERS / BUILDERS****BB Wilson & Son**

All aspects of Joinery and Building from Ground Work to Slating Landscaping, Conservatories Loft conversions, Extensions. Established 50 years, no job too small Free estimates.  
 Tel: 07972 811 706 - 015395 58340

**MICHAEL DAVIS JOINERY LTD.** All aspects of joinery work undertaken. Quality workmanship guaranteed from time served joiners. Over 30 years experience.  
 Tel 07791409755 or 015395 35152



**Mark Walmsley Building Services**  
 All building work undertaken  
 Renovations, Extensions etc Call Grange  
**015395 32126**

## W.G.BROWN LIE Ltd.

### Joinery & Building Contractors

All high quality Bespoke Joinery.  
 Extensive local experience in holiday homes & second homes since 1999.

- Complete roofing services; natural slate, tiling, leadwork, chimneys & velux installation
- Extensions & renovations
- Loft Conversions
- Refurbishments
- Conservatories, windows & doors in uPVC or Timber
- Hardwood Flooring Specialists

IGLS. 29 Greengate, Levens, Cumbria. LA8 8NF

**Tel: 015395 60673**  
**Mob: 07810 602999**  
[email: wgbrownlieldt@gmail.com](mailto:wgbrownlieldt@gmail.com)

## LANDSCAPING

**GEORGE NEWTON TRADITIONAL STONERWORK LANDSCAPING** Lime pointing and rendering. Established 1996 Mob 07818802659

**HARD LANDSCAPING** fencing, walling, block paving, flagging, paths, patios, driveways, ponds. Free estimates, all work guaranteed. Call Martin Eland 015395 594 72, mobile 07821 260 730

**GBW Landscaping.** For all your landscaping needs. Please call Guy Williams for a friendly chat about your ideas and plans. 07746 136440 or 015395 34048 www.gbwwlandscaping.co.uk

**Phil Hawkins**

**GROUND WORKS**

patios | driveways | garden fencing | tarmacing drainage | digger work 20 years experience

m.07890 636167

phgroundworks@outlook.com

## LOCKSMITHS

**Locks Express** The Only Locksmiths Based In Grange. All Locks Repaired & Fitted. Trading Standards Approved & Police Checked. Eden Mount Road, Grange. Telephone 07886 831336



The only Locksmiths based in Grange

All Lock Problems Solved

- Trading Standards Approved
- Locks Opened, Repaired & Fitted
- Domestic & Commercial
- UPVC Door Lock Specialists
- Police (CRB) Checked
- High Security Locks Fitted
- OAP Discount

Eden Mount Road, Grange  
Mobile 07886 831336  
www.locks-express.com



**LAKEWOOD**

- Lock & Safe Co -  
Locksmith & Safe Engineer

Locks and safes, supplied, repaired and fitted with over 30 years experience

Edward Lenihan 07407 192270

**Grange Now  
Deadline 15th Sep**

## MAN WITH VAN

**THE DOBSONS**

From a letter to a sofa we cover any distance. 01539522612

## MECHANIC

**GEORGE SMITH**



Tel 07805 953424  
gsmobilevehiclerepair@gmail.com

We work on all makes and models, servicing, diagnostics, clutches, tyres, brakes, etc

## MONUMENTAL MASONS

**Able Memorials** - Monumental Masons. Time served masons with over 30 years experience. New memorials, Second inscriptions, repaints, regilds and renovations. Free estimates and home visits given. 1 Wildman Street, Kendal LA9 6EN. Phone 01539 735583 or 01524 784920.

**PARKIN and JACKSON** Monumental Masons. New memorials, second inscriptions, repaints, regilds and renovations. Visit the showroom on 14 Appleby Road, Kendal LA9 6ES. Telephone 01539 722838. Free estimates and brochure on request. www.parkinandjackson.co.uk

## NURSERY SCHOOL

**ACORN MONTESSORI** Mon to Thurs 8.45 am - 3.15 pm, Friday 8.45 am - 12.15 pm. Contact Melanie Knight 015935 35629 / 07971 828 797.

## NUTRITION & WEIGHT

Want to shape up? Get more energy? Feel Amazing? I have done exactly that! Let me show you HOW. Call Debs 07949 311513 or 015395 58773 email debsandy@yahoo.co.uk

## OPTICIANS

**LAKELAND OPTICAL**, Main Street, Grange. 015395 32951 Independent practice with owner/optometrist Lisa Sariwee. Private & NHS Examinations. NHS Emergency Eye Care service. Contact Lenses. Latest equipment, modern frames, friendly service. Thank you for supporting a local business. www.lakelandoptical.co.uk

## PAINTING & DECORATING

**Lady Interior Painter** and bespoke murals Experienced • Reliable • Careful Colour schemes • Styling tips Grange and surrounds Facebook • Instagram @paintpadinteriors Call Kate at Paint Pad Interiors 07989 969058

**Lee Logan Ltd** Quality painting, decorating & tiling. Reasonable rates, free quotes. Experienced, reliable, local. 07708 213079

**D Logan Ltd** painting and decorating. 07931258752

**DAVID HODGSON** experienced time served painter and decorator TEL 015395 34438 OR 07999953025

**PRF DECORATING** - NEW TO THE AREA PUNCTUAL, RELIABLE, FRIENDLY. All aspects of painting and decorating undertaken. Time served, free no obligation quotes. Call Paul Foster 07500 926601.

## PAINTING & DECORATING

**Trevor Bedding** painting and decorating 07810717450

**KC Services** Exterior painting and decorating. Free quotes. 07956 266264. Kevin.Clarke9@gmail.com

## PEST CONTROL

**TOWN & COUNTRY** Pest Control Over 30 years experience. Most up to dates methods. 24 hour service. All aspects covered including Cluster flies. Wasps, Fleas, Rats, Mice, Moles. Tel. 015395 62795. Mob 07887 977 085. www.tandcpestcontrol.co.uk

## PET FEEDING

**THE DOBSONS**

Dogs cats and other small animals 01539522612

**Jude** 07914 644852 Fully insured, experienced, kind and caring

## PET SITTING

**Care & sleepover services, in your home**, for pets and smallholdings. Trustworthy/reliable, experienced, former veterinary assistant. Suzanne 07979 792467

## PICTURE FRAMING

**Picture Framing Service** at the Beach Hut Gallery - Kents Bank Station. beachhutgallery@googlemail.com 015395 35959.

## PLUMBING & HEATING



**Miniheat** PLUMBING & HEATING ENGINEERS Est. 1968

**GAS LPG PLUMBING**

Shop/office 015395 32053

office@miniheat.co.uk

**TAYLOR**

Plumbing & Heating Engineers Gas Safe Registered, Lindale **Darren Taylor 07778 394 206**

**A. TYSON PLUMBING & HEATING LTD.**

Gas Central Heating

Worcester Accredited Installer

Gas Safe Registered

**015395 32761 - 07967 384 114**

**P.W. Gas Services Plumbing & Heating** Gas Safe Registered

**OIL - GAS - LPG** Worcester & Baxi Accredited Installer Phil Wood

07793 543440

**MJK Plumbing & Heating Ltd.**

Professional and friendly, fully insured. Domestic and commercial. Emergency call-outs. Boiler & plumbing repairs. All plumbing undertaken to a very high standard, we only use the best materials to ensure a quality job. Call 07918 191540

## PORCELAIN RESTORERS

**Porcelain, Ceramics, Paintings** restored. JM RESTORERS. 015395 68915.

**Please support  
our local  
businesses**

## POWER WASHING

**POWER WASHING SERVICE**  
TEXT OR CALL MARK: 07368984485

PATHWAYS  
PATIOS  
DECKINGS  
DRIVEWAYS



**Paths, patios, driveways, decking, fencing etc**, John Wrigley 07885 532365

**John Nottingham** 34904

**Power Washing** Pathways, Patios, Deckings, Driveways Mark 07368 984485

**Under Pressure** - Exterior Cleaning Services Our services include Pressure Washing, Gutter Cleaning, Traditional Window Cleaning and Sealing Services. Contact Daniel for a free quote on: 07500 772158

## PROPERTY MAINTENANCE

**BUILDING SERVICES** stone facing, water mains and drainage. Pressure washing, painting. Free estimates, all work guaranteed. Call Martin Eland 015395 59472, mobile 07821 260 730.

**Repairs, alterations**, small building/joinery projects our speciality. Time served joiners, John 07885 532365

## PROPERTY TO RENT

Retail property to rent, Main Street, Grange over sands, for details please apply to chris@directimage.tv or Tel.07867551144

## REMOVALS

**Steele's Removals Ltd**

Local \* National \* International  
Secure Self- Storage 24hour access  
+ Self-Drive Removal vans  
Storage facilities in Flookburgh  
www.steelesremovals.co.uk  
info@steelesremovals.co.uk  
01229 820 777

## SHEDS

**GRANGE SERVICES** - shed removal, repair, and installation, Steve 07968 100114

## STORAGE

**GENERAL/CARAVAN/BOAT STORAGE.** Lawler 34136.

**Caravan, boat, trailer and motorhome storage.** Grange over sands area. All year round. Secure compound. Tel Paul 07774 822069

## TAXIS

**A Star Taxis** - all airports, local and long distance. Shopping trips and hospital appointments. Phone Ally or Debbie 07805 862658

**24/7 Taxis**  
(Promenade Taxis)  
**015395 63405**

7 days a week taxi service  
4.6 & 8 seater cars  
wheelchair access vehicles

we do all work inc airports, stations, hospital/docs, shopping and tours.  
Accounts and Contracts available.



## PAINTING & DECORATING



DIFFERENT STROKES

PAINTING & DECORATING LTD

For your peace of mind we are now operating in-line with the current Covid19 safety precautions

Unit 1a, Station Yard, **Grange-over-Sands** LA11 6DW Please visit or give us a call should you require a **FREE** quotation for any size decorating project.

TEL: 015395 35832 | EMAIL: [info@differentstrokes-uk.com](mailto:info@differentstrokes-uk.com) | WEBSITE: [www.differentstrokes-uk.com](http://www.differentstrokes-uk.com)



COLOUR YOUR WAY



### TILING

**Walls & Floors** expert tiling service, call me with your plans, Howard 07748 800741

**Lee Logan Ltd** 07708 213079

### TREE SURGEON

**Max Reynolds Tree Services** - fully qualified, professional and reliable Arborist covering all aspects of tree work and forestry contracting for both commercial and domestic clients. 07376804724 enquiries@maxreynoldstreeservices.com [www.maxreynoldstreeservices.com](http://www.maxreynoldstreeservices.com)

### TREE SURGEON

**The Care of Trees** - 15 years experience in all aspects of pruning and removals. Tree surveys for planning applications & condition and risk assessments. Contact Matt 07595 050821 or info@thecareoftrees.co.uk

**BT FORESTRY** Based in Grange. Tree, hedge and dead branch removal, storm damaged trees, pruning and bird/owl box installation. Call/text Ben 07746995045

### TREE SURGEON

**Acorn Tree Services** in Grange. 07771 680 919 or 015395 34299

**Grange Now  
Deadline 15th Sep**

### WINDOW CLEANING

**SKB WINDOW CLEANING**

Now offering high level gutter clearing up to 4 stories All work checked by inspection camera mob: 07783802192 tel: 015395 62852 e.mail: windowcleaner311@hotmail.co.uk

### WINDOW CLEANING

**ClearView** 015395 33810 or 07971 344277

## ROOFING

**Your local roofing specialist  
With over 35 years of experience**

- ✓ Pitched roof, slating & tiling
- ✓ Leadwork / welding
- ✓ Gutters
- ✓ Velux Installation
- ✓ Chimney Stacks
- ✓ Repairs & re-roofing
- ✓ All structural work undertaken



**All aspects of roofing**

**Tel: 015395 68046  
Mob: 07824 469427**

Email: [nc@carter-roofing.co.uk](mailto:nc@carter-roofing.co.uk)  
[www.carter-roofing.co.uk](http://www.carter-roofing.co.uk)



**BRACKEN'S**

**ROOFING**

**& BUILDING COMPANY LIMITED**



Est. 1997 - 30 years experience | Re-roofing slate, tile, pitched, lead, flat roofs Installation of Velux windows and roof lights | Insulation work (up to building control standards) | PVC guttering and fascia boards | Listed property works Lead work | Slate repairs

**Tel 01539 733401**

[info@brackensroofingkendal.co.uk](mailto:info@brackensroofingkendal.co.uk)

Bracken's Roofing & Building Company Limited | Unit 9B, Lake District Business Park Mint Bridge Road | Kendal | Cumbria | LA9 6NH

Registered as a limited company in England and Wales under company number: 03362418

Commercial & Domestic

**VELUX®**



Covering Cumbria and Lancashire

**ASK Roofing**

Specialists in Listed Buildings, Natural Slate,

Slate & tile repair | Chimney work | Guttering | Ridge tiles | Re-roofs  
Lead work | All felt and fibreglass flat roofs | Wood & UPVC fascia boards

Registered Velux window installer.

[www.askroofing.co.uk](http://www.askroofing.co.uk)

Grange: 015395 35635  
Email: [info@askroofing.co.uk](mailto:info@askroofing.co.uk)

Mobile: 07788 411602  
**FREE ESTIMATES**

## HOME SERVICES

- Man and a Van Service
- Property Security Checks
- Carpet & Upholstery Cleaning



- Pet Feeding
- Cleaning
- Baby Sitting

Our man with a van service can deliver from a letter to a sofa and any distance in the UK. We have the very latest commercial carpet cleaning machine to make your carpets look and smell as good as new. We can carry out all types of cleaning from domestic to commercial. Our pet feeding and dog walking is a totally bespoke service please get in touch with your requirements. If you want a night out and need a babysitter please let us know we will be glad to help you. Whilst you are away from your property if you would like your plants watering or a basic check of the premises etc please let us know.

Contact us today for a friendly, no obligation chat... Tel 015395 22612 or 07704032012

Email - thedobsonsketh@gmail.com www.thedobsonsonline.co.uk

### PROPERTY SERVICES

#### hartmanns Property Services

- Bathroom and Kitchen Refurbs
- All Electrical Works
- Electrical Appliances
- Renewable Energy
- CCTV
- Handyman Service
- Power Washing
- Gutter Clearance
- Grass Cutting
- Garden Tidy
- Fully Insured and Approved
- No Job Too Big or Small
- Free Quotations

**Tel 07876 231671**



### PAINTING & DECORATING

**D. Logan Ltd.**  
PAINTING & DECORATING

- 18 years experience
- Internal and external

Contact David for a free quotation  
07931 258 752 or 07732 362 186

### PLUMBING & HEATING

**A. TYSON**  
PLUMBING AND HEATING LTD

185147 30 years experience

Gas Central Heating

Worcester Bosch Group Accredited Installer

• HIGH QUALITY • FRIENDLY SERVICE •  
• REASONABLE RATES •

FREE ESTIMATES  
Tel: 015395 32761  
Mob: 0796 7384114

### PLUMBING & HEATING

#### Wareing & Son Plumbing & Heating Engineers

Locally established  
with over 40 years  
experience.



No Call Out Fee  
Prompt, friendly service

**Tel: 35425**

### TUITION

#### PARLIAMO ITALIANO!

Italian conversation classes  
at the Victoria Hall

Beginners Thursdays from 2nd November 7-8.30  
Improvers (Yr 2) Tuesdays from 3rd October 7-8.30  
£45 for 6 weeks / £9 per week drop-in

Contact Caroline 07813 952055 caroline\_hakkinen@mac.com

### TAXIS

#### ECONOMICAL

#### TAXIS LTD

P & J BUSHELL

Ring Paul or Joan  
Tel: Flookburgh 58901

### BUILDING

#### DAVID ROCKLIFFE GENERAL BUILDING

All aspects of building work undertaken.  
Extensions, plastering, tiling etc.  
Over 30 years experience. No VAT on labour  
Telephone 0775 4439694

### PAINTING & DECORATING

#### Andy Huddart Painter & Decorator

- 35 years experience
- free no obligation quotes

**07766 337 625**

andyhuddart@btinternet.com

Next Deadline 15th Sep

#### Miniheat PLUMBING & HEATING ENGINEERS

- GAS
- LPG
- PLUMBING

2 DEVONSHIRE PLACE, KENTS BANK ROAD  
Shop/office 015395 32053  
office@miniheat.co.uk

### REPLACEMENT UPVC

#### IAN BUCHAN WINDOWS

UPVC Windows, Doors  
Replacement Double-glazed Units  
Repairs I Fascias, Soffits etc

**015395 32593 | 07971 698541**

Email ianbuchan17@gmail.com  
Assure registration | 30 years experience

### WANTED

**TOOLS**, gardening, joinery, engineering etc. Garages cleared.  
Tel 32793

**Clocks by Barber** of Winstar and other Lake District makers 01229 822680

**War Medals WW1/WW2** & earlier  
Also badges, bayonets, swords, helmets, uniforms, anything military considered. Also interested in Railway Items, Lamps, Signs etc.  
Tel Colin 07712206786

**Old suitcases**, trunks, leather bags, wooden boxes, wooden tool boxes, wooden ladders, galvanised / enamel buckets, watering cans, old kitchenware, TG Green 'blue and white' Cornishware, Sewing machine cast iron stands Peter 07539 290 879/eigerbird@hotmail.co.uk

### FREE FOR SALE

Next deadline is 15th September, subject to space. Five items max. Single items max £200, in writing to our offices or e-mail info@grangenow.co.uk, include your name and address

**Single bed** with two under bed storage drawers and white metal head board. Also a single mattress topper, electric blanket, valance sheet and fitted sheet. £50 for everything. 01539534544 07900292385.

**Bathroom Cabinet.** Four mirrored doors. Model Jack by Drench from Tap Warehouse. New. Still in box. £80.00. Height - 650mm, Width - 1180mm, Depth - 110mm. Telephone 07446199191

**Hinari foot bath.** £15 Facial spa. £7.50 both in original packaging Full length Cashmere coat Colour Grey Size 22. £45 ono Buyer collect. Tel. 07798 853857

**Cherry wood** occasional table which converts to a green baize card table £40. Von Chef meat grinder as new £10. Six First World War embroidered postcards framed £20. Phone 07833455148.

**'MARANTZ'** receiver/cd player (w/ifi enabled) and two Bose mini speakers and Bose bass unit. Full working order. Photo available. £75 tel 015395 34516

**Bosch Classixx** 1200 washing machine in good condition. £50. Tel 07970 845573.

**Oak TV unit.** Like new. 2 shelves and 6 drawers. 146cm wide, 50cm deep, 50cm high. £75. 07854972918

**Ladies Cycle** Claud Butler Windermere model 15" frame 10 gears V.G. condition £75 07494 706299

**Guitar** - Attractive design v.g.c Maestro Capo Liutao Dirigente with embroidered strap and music stand. Fitted leather padded case £20 Tel: 015395 34505

**Electric 2 oven aga.** VGC cream - 07971 701361

**Gazebo like new** approx 2.5 mtrs square. Green & white with instructions £15. 01539 533152

## ACCOUNTANCY, TAXATION AND BUSINESS ADVICE

ACCOUNTANTS



- Year End Accounts
- Cash Flow Forecasting
- Business Planning
- Company Formation
- Tax Returns
- Bookkeeping
- Periodic Accounts
- VAT Returns
- Payroll
- Auto Enrolment

015395 36163 www.bfmsltd.co.uk

3 Lowther Gardens, Grange-over-Sands, LA11 7EX

